

# Catalog

## Possible Symbolics 33

### Assembled Work - Fall 2011

Paintings & Sculpture Exhibition  
Johnson & Wales University Library  
October 3-November 11



**Stephen Andrade**

Associate Professor  
Computer Graphics  
School of Technology  
Johnson & Wales University

Opening Reception  
Thursday, October 6  
4-5:30pm  
University Library  
Yena Center  
2nd Floor  
111 Dorrance Street  
Providence, RI

Available for purchase or rental  
Contact [sandrade@jwu.edu](mailto:sandrade@jwu.edu)  
401-253-1252

Possible Symbolics  
Assembled Work Fall 2011

Description

I. Paintings on masonite panel



1. *Glyph1* - 2011 Acrylic, latex, watercolor paint on masonite panel 18 x 24 inches.



2. *Glyph 2* - 2011 Acrylic, latex, watercolor paint, on masonite panel 11 x 15 inches.



4. *Wall Glyphs* - 2011 Acrylic, latex, watercolor paint, cord on masonite panel 24 x 24 inches.



3. *Glyph 3* - 2011 Acrylic, latex, watercolor paint, on masonite panel 24 x 24 inches.





5. *Figurative 2* - 2011 Acrylic, latex, watercolor paint, on masonite panel 24 x 24 inches.



6. *Figurative 3* - 2011 Acrylic, latex, watercolor paint, on masonite panel 24 x 24 inches.



7. *Possible 1* - 2011 Acrylic, latex, watercolor paint, on masonite panel 24 x 24 inches.



8. *Possible 2* - 2011 Acrylic, latex, watercolor paint, on masonite panel 24 x 24 inches.



9. *Figurative 1* - 2011 Acrylic, latex, watercolor paint, varnish on masonite panel 36 x 36 inches.



10. *Possible Symbolics 1* - 2011 Acrylic, latex, paper, on masonite panel 24 x 24 inches.



11. *Possible Symbolics 2* - 2011 Acrylic, latex paint, paper, on masonite panel 24 x 24 inches.

## II. Sculpture and assemblage



12. *Possible Screen* - Wood, cord, metal, bone, waxed string on metal base. 15 inches .





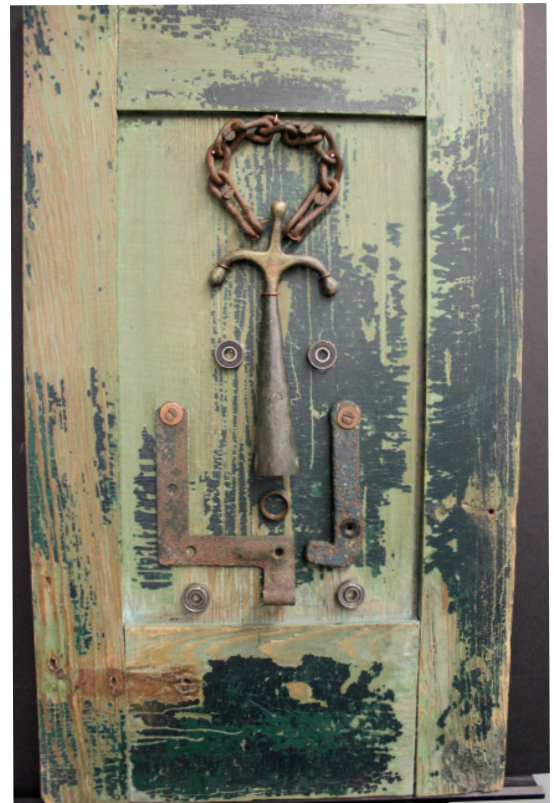
13. *Lamp base with brush* - Copper Arts & Craft base with worker's brush, 18 inches.



14. *Triptych 1* - Metal objects, burlap, paint, fasteners on wooden panel 15 x 26 inches.

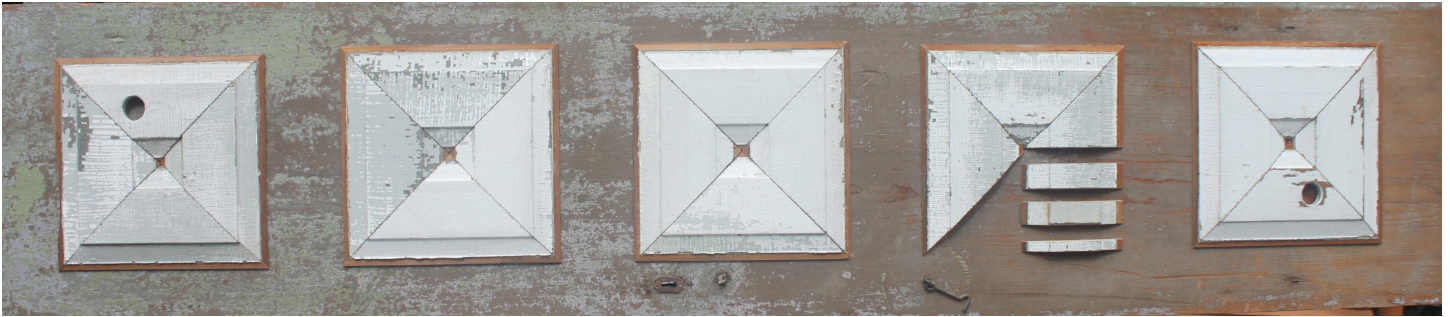


15. *Triptych 2* - Metal objects, enamel medallion, paint, fasteners on wooden panel 15 x 26 inches.



16. *Triptych 3* - Metal objects, fasteners on wooden panel 15 x 26 inches.





17. *Parse* - Reconstructed distressed wooden decorative panels, fastened on antique wooden door, 80 x 18 inches .

### III. Works on paper - unframed



18. *Untitled 1* - Acrylic, latex, watercolor, silver pencil on paper, 13 x 17 inches



19. *Untitled 2* - Acrylic, latex, watercolor, silver pencil on paper, 13 x 17 inches





20. *Untitled 4* - Acrylic, latex, watercolor, on paper, 13 x 17 inches



21. *Untitled 3* - Acrylic, latex, watercolor, paper/fabric book binder on paper, 13 x 17 inches



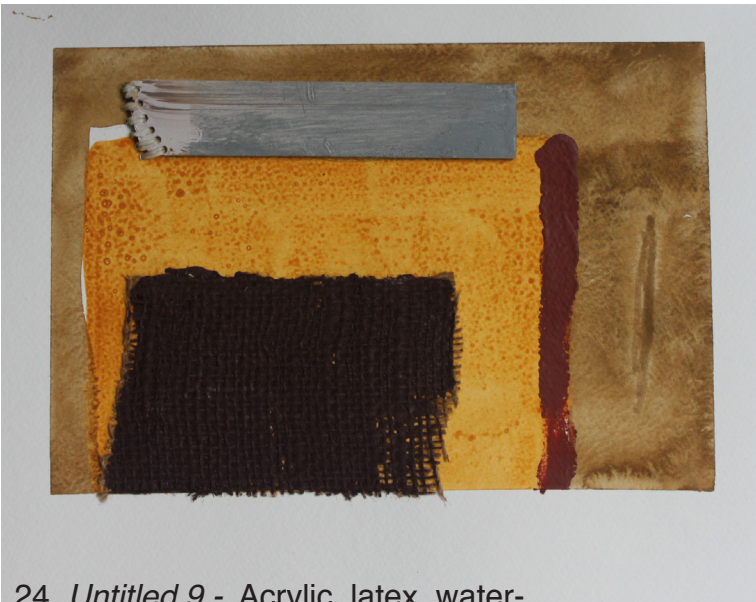
22. *Untitled 7* - Acrylic, latex, watercolor, cord on paper, 13 x 17 inches



23. *Untitled 8* - Acrylic, latex, watercolor, cord on paper, 13 x 17 inches



### III. Works on paper



24. *Untitled 9* - Acrylic, latex, watercolor, burlap, wood, waxed string on paper, 13 x 17 inches



25. *Untitled 10* - Acrylic, latex, watercolor, wood, grout on paper, 13 x 17 inches



26. *Untitled 11* - Acrylic, latex, watercolor, on paper, 13 x 17 inches





27. *Untitled 6* - Acrylic, latex, watercolor, cord on paper, 13 x 17 inches



29. *Untitled 12* - Acrylic, latex, watercolor, on paper, 13 x 17 inches.



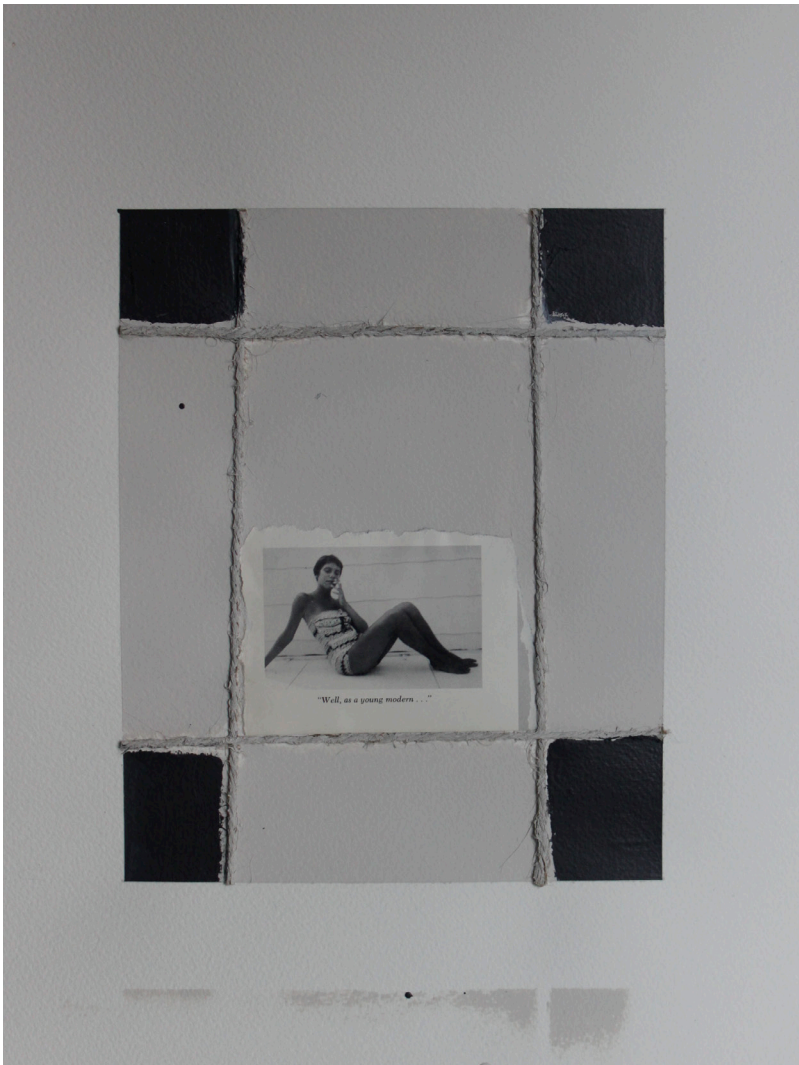
28. *Untitled 13* - Acrylic, latex, watercolor, grout, silver pencil, on paper, text adapted from Dr. Frank Crane, Man Message Corporation, pamphlet circa 1921, 13 x 17 inches.



30. *Untitled 5* - Acrylic, latex, watercolor, on paper, 13 x 17 inches



### III. Works on paper



31. *Young Modern* - Acrylic, latex, watercolor, grout, paper photo 1961, cord, on paper, 13 x 17 inches.

Additional and custom abstracts  
upon request



32. *11-22-33* - Acrylic, latex, watercolor, silver pencil, pen, cord on paper, 13 x 17 inches.