

2023

Coral Isle Cafe, Menu, Date unknown

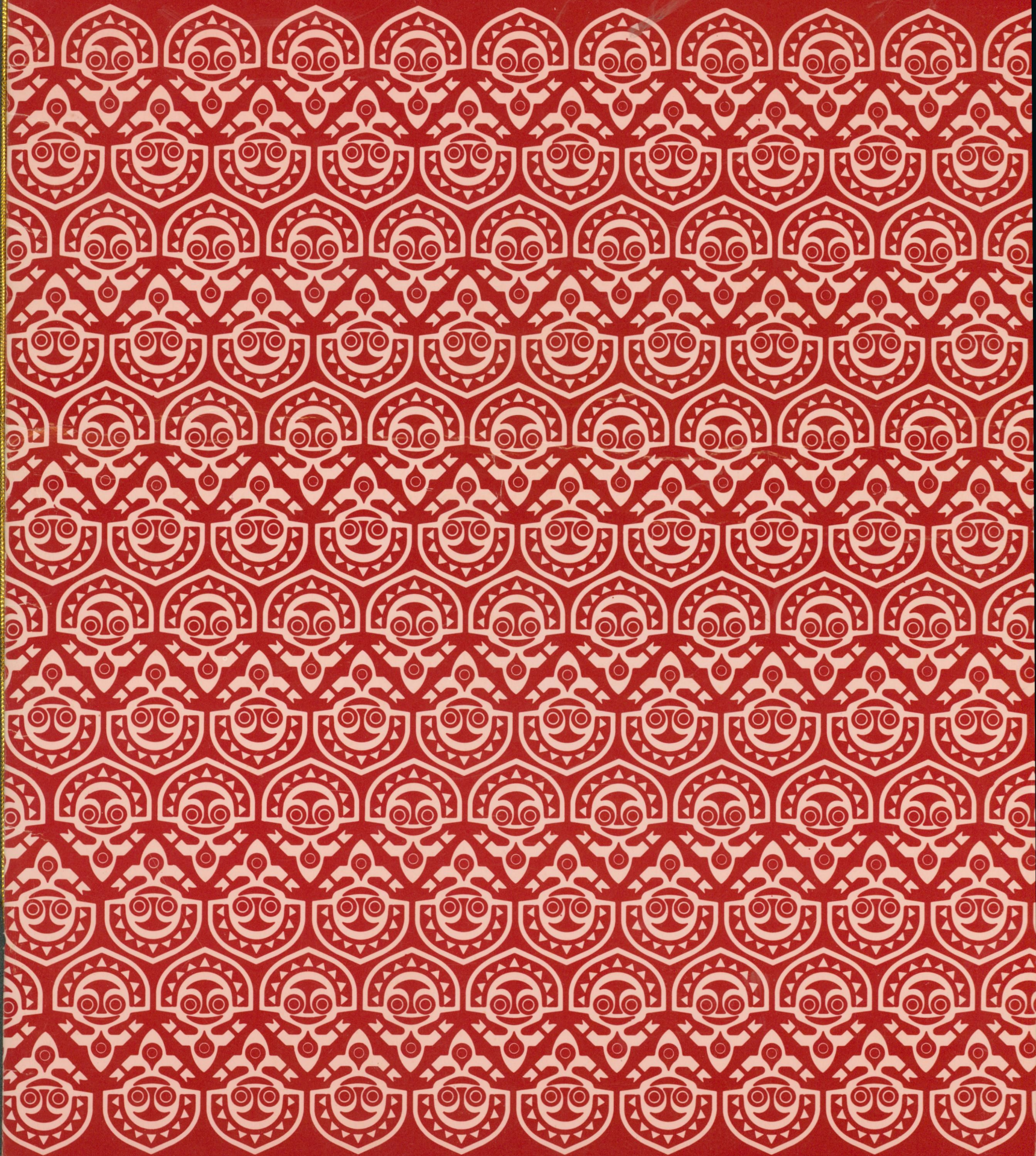
Follow this and additional works at: https://scholarsarchive.jwu.edu/whitman_menu_donations

Repository Citation

"Coral Isle Cafe, Menu, Date unknown" (2023). *Diane Whitman donations*. 106.
https://scholarsarchive.jwu.edu/whitman_menu_donations/106

This Cafe Menu is brought to you for free and open access by the The Donor Menu Collections at ScholarsArchive@JWU. It has been accepted for inclusion in Diane Whitman donations by an authorized administrator of ScholarsArchive@JWU. For more information, please contact mmatook@jwu.edu.

Coral
Isle
Café









LUNCH AT THE CAFE

Soup

| | | |
|-------------------------|------|------|
| Soup of the day | bowl | 1.50 |
| Oriental Vegetable Soup | bowl | 1.50 |

Appetizers

| | |
|----------------------------|------|
| Seafood Cocktail | 5.25 |
| Tossed Green Salad | 1.50 |
| Choice of dressing | |
| Fresh Spinach Salad | 1.75 |
| Fruit Cup | 1.50 |

Exotic Salads

| | |
|--|------|
| Mount Fiji | 5.75 |
| Tossed greens with julienne of ham, turkey, salami, bacon, cheese, eggs and tomato, choice of dressing | |
| Bali Hai | 5.25 |
| Fresh tropical fruits, citrus sections, melon, grapes when in season, nutted bread and frozen yogurt | |
| Surfer | 6.95 |
| Crab, smoked fish, shrimp and tuna fish, served on a bed of lettuce | |
| Tahitian Monak | 5.25 |
| Chicken salad served in a pineapple with fruit compote, frozen yogurt, nutted bread and cream cheese | |

Cold Sandwiches

| | |
|--|------|
| Polynesian Resort Clubhouse | 5.25 |
| Sliced turkey, bacon, lettuce and tomato with fruit cup and Kosher dill pickle spear | |
| Shrimp Salad Waena | 4.75 |
| Shrimp salad with lettuce and tomato on toasted rye bread with potato chips and Kosher dill pickle spear | |
| The Hoagie | 4.50 |
| Roast beef, ham, turkey and cheese, lettuce and tomato served with vinaigrette dressing in a hoagie bun with potato chips and Kosher dill pickle spear | |
| The Villager | 5.50 |
| Pita bread stuffed with bean sprouts, vegetables, ham, turkey and sliced egg, with honey orange dressing and fruit cup | |

Hot Sandwiches

| | |
|--|------|
| Chicken Maori | 5.50 |
| Batter-dipped boneless breast of chicken served open face, topped with a honey sesame seed glaze, steakhouse fries | |
| Hamburger | 5.25 |
| Beef patty served on a sesame seed roll, steakhouse fries | |
| With melted american cheese | 5.50 |
| Patty Melt | 5.50 |
| Beef patty with cheddar cheese and bacon on rye bread, steakhouse fries | |

| | |
|--|-------------|
| Teriyaki Steak Sandwich | 8.50 |
| Sliced marinated steak on sourdough bread, steakhouse fries | |
| Palu Palu | 5.25 |
| Tenderloin of beef with pepper strips, grilled onions, mozzarella cheese on a Kaiser roll, cole slaw | |
| Mahie Oahu | 4.95 |
| Sliced pork and bacon with pineapple and melted swiss cheese in a crescent roll, cole slaw | |

Entrees

| | |
|--|-------------|
| Baked Filet of Scrod | 8.25 |
| Boneless filet of scrod with seasonal vegetable, parsley potatoes and tartar sauce | |
| Sweet and Sour Chicken | 7.95 |
| Tender fried chicken strips, sweet and sour sauce, oriental rice, vegetable | |
| Spaghetti and Meatballs | 5.95 |
| Garlic bread, grated parmesan cheese | |

Side Orders

| | |
|------------------|------|
| Steakhouse fries | 1.00 |
| Cottage Cheese | .85 |
| Vegetable | 1.50 |
| Cole Slaw | .85 |

Beverages

| | |
|--|-----------|
| 100% Colombian Coffee, | |
| Regular | .75 |
| Brewed Decaffeinated | .75 |
| Tea, hot chocolate | .75 |
| <i>Coca-Cola</i> , Sprite, Diet Coke, Mr. Pibb | .75 |
| Milk | .75 & .90 |

Desserts

| | | | |
|-------------------------------------|------|----------------------------------|------|
| Ice cream, sherbet or frozen yogurt | 1.25 | Pineapple cheesecake | 1.75 |
| Chocolate layer cake | 1.25 | Royal sundae | 2.25 |
| Lime chiffon pie | 1.50 | Hot fudge, caramel or strawberry | |
| Pecan nut pie | 1.25 | | |

CHILDREN'S MENU

(12 and Under)

| | | | |
|--|-------------|---|-------------|
| The Chieftain | 3.60 | Wahine Dancer | 3.80 |
| Fried chicken strips steakhouse fries | | Spaghetti and meatball, parmesan cheese and garlic bread | |
| The Outrigger | 2.95 | Island Trader | 1.95 |
| Beef patty served on a sesame seed roll, steakhouse fries | | Peanut butter and jelly sandwich, potato chips | |
| With american cheese | 3.25 | | |

Child's sundae 1.50

Sales tax and gratuity not included in price



To complement your meal, may we suggest:

BURGUNDY • ROSÉ • CHABLIS

| | |
|---------|-------|
| Litre | 10.00 |
| ½ litre | 5.00 |
| Glass | 2.00 |

