

2015

Johnsonian 2015

Johnson & Wales University - Providence

Follow this and additional works at: <https://scholarsarchive.jwu.edu/yearbooks>



Part of the [Higher Education Commons](#)

Repository Citation

Johnson & Wales University - Providence, "Johnsonian 2015" (2015). *Yearbooks*. 88.
<https://scholarsarchive.jwu.edu/yearbooks/88>

This Providence Campus Yearbook is brought to you for free and open access by the University Archives at ScholarsArchive@JWU. It has been accepted for inclusion in Yearbooks by an authorized administrator of ScholarsArchive@JWU. For more information, please contact jcastel@jwu.edu.



THE JOHNSONIAN 2015







TABLE OF CONTENTS



03 LETTER FROM THE PRESIDENT

04 THE WILDCAT WAY

09 RESIDENTIAL LIFE

15 STUDENT LIFE

43 CLUBS & ORGANIZATIONS

53 ATHLETICS

67 COMMENCEMENT

70 CLASS OF 2015



LETTER FROM THE PRESIDENT

Dear Class of 2015,

Congratulations on your graduation from Johnson & Wales University! With this achievement, you add your voice to the nearly 100,000 individuals who proudly call JWU *alma mater*. You join the company of those who for more than a century have come to JWU motivated to enrich their personal lives and prepare themselves for professional success.

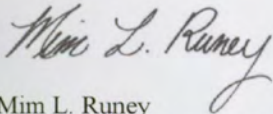
Your time here has left an indelible mark on the university. Buildings have risen, traditions created, competitions won and friendships forged. You've brought new spirit to the university, and true meaning to the Wildcat Way in your dedication to pride, courage, character and community. You've honored those who came before you by doing much to strengthen our university.

As always, I look forward to spending time with *The Johnsonian*. It chronicles the fullness of your Johnson & Wales University experience that I will enjoy reflecting upon for years to come. Thank you for leaving all of us with such great memories.

Whether you will be staying on in Greater Providence or traveling great distances to explore graduate studies or careers, please know that the Providence Campus is always home to you. It is a place where you can reconnect with friends and nourish your interests. While away, I hope you'll take advantage of a network of alumni from every state and in countries around the world and seek out our alumni chapters and events. We'd love to hear of your successes and accomplishments.

My pride in what you've done for JWU is shared by the entire university community. You've blazed the Wildcat Way for future generations of students, and for that you have our gratitude. Best wishes for what lies ahead.

Sincerely,



Mim L. Runey
Providence Campus President
Chief Operating Officer

“

**YOU'VE BROUGHT NEW SPIRIT TO THE UNIVERSITY,
AND TRUE MEANING TO THE WILDCAT WAY IN YOUR
DEDICATION TO PRIDE, COURAGE, CHARACTER AND
COMMUNITY.**

”

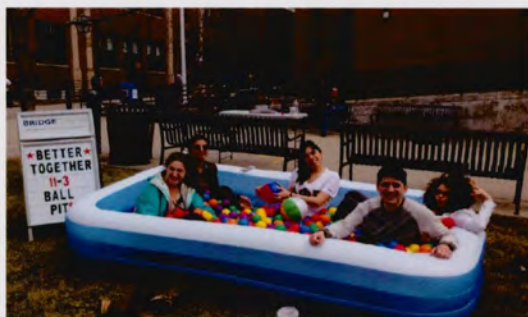
PRIDE



COURAGE



CHARACTER



COMMUNITY





RESIDENTIAL LIFE



RESIDENCE HALLS





WEST HALL



HARBOR VIEW



WASHINGTON APARTMENTS

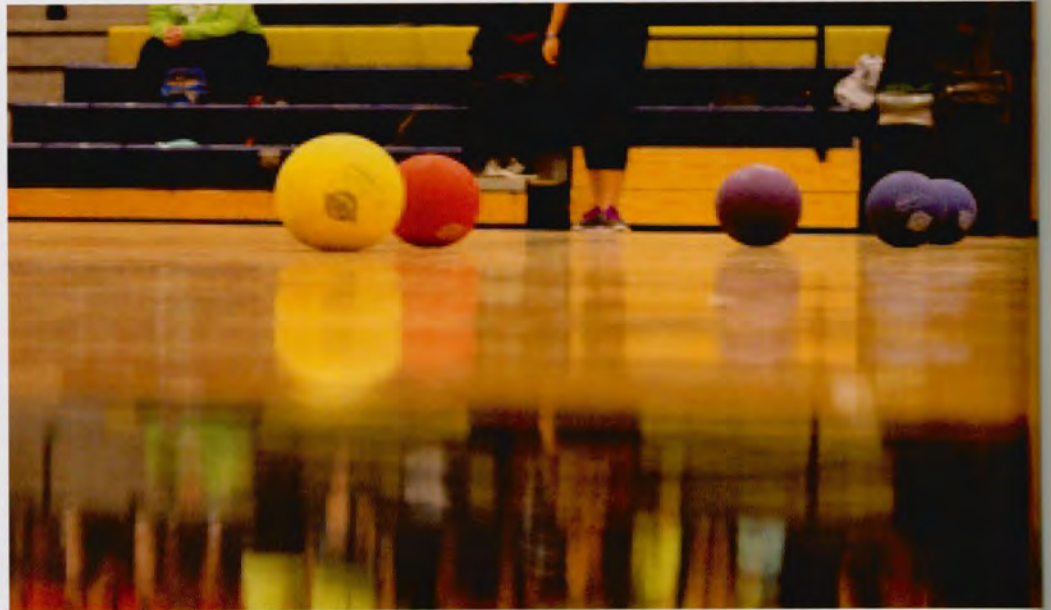


HARBORSIDE VILLAGE

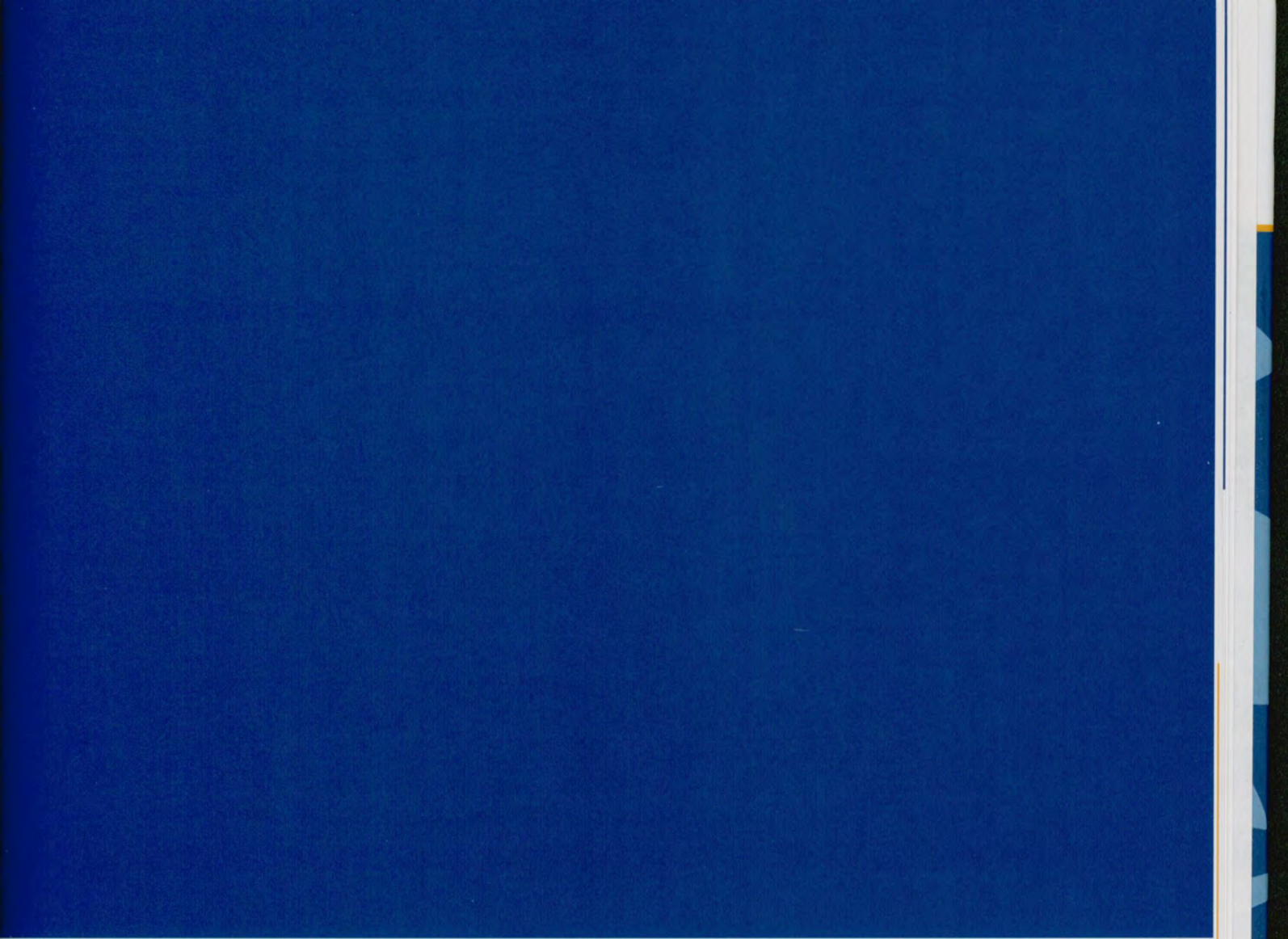


CENTENNIAL HOUSE

RESLIFE RUMBLE







STUDENT LIFE



16

STUDENT INVOLVEMENT NIGHT

28

RELAY FOR LIFE

18

FAMILY WEEKEND

30

BATTLE OF THE CAMPUS

20

MIDNIGHT MADNESS

32

WAHOO WEEKEND

22

HOLIDAY HOOPLAH

34

ALTERNATIVE SPRING BREAK

24

HOLI FESTIVAL/NEPAL VIGIL

36

LEADERSHIP AWARDS

26

SNOBALL

38

GREEK AWARDS





STUDENT INVOLVEMENT NIGHT

Student Involvement Night is a longstanding, annual event where more than one-hundred and seventeen clubs and organizations can meet with new and returning students. It's a great opportunity to see what extracurricular groups you can get involved with on-campus, and a great opportunity to make new friends. Fraternity and Sorority Life is also represented at this popular event to showcase what their organizations are about.

Students had a blast posing for photos with our Student Involvement Instagram frames and enjoying Del's Lemonade, a Rhode Island tradition. Students could also enter a raffle to win prizes, ranging from a Samsung Galaxy Tablet, a 32 inch TV and DVD player combo, \$50 gift card to Target, and a \$400 gift card to Southwest Airline.





FAMILY WEEKEND

The annual Family Weekend celebration brought tons of fun activities for new and returning students and their families. The weekend of celebrations began on Friday, October 17 with a Price is Right kick-off event, followed by Late Night Trivia in Pepsi Forum.

On Saturday, students and their families attended the Family Weekend Parade, with the much anticipated revealing of the new wildcat statue. Clubs and organizations decorated cars and floats and marched to show off their Wildcat spirit.

Following the parade was the big reveal of the wildcat statue in front of the Wildcat Center. President Mim Runey spoke in regards to the statues representation of the Wildcat Way, engraved at the foot of the statue. The Wildcat Way is composed of four themes: Pride, Courage, Character, and Community.





MIDNIGHT MADNESS

Midnight Madness kicked-off with a Pre-Madness party in front of the Wildcat Center this year. Clubs and organizations set up around the newly revealed Wildcat Statue to offer face painting, free popcorn and cotton candy, as well as other games and activities to get students pumped for the night of madness and school spirit to come.

The event featured athletic teams showing their talents and skills, as well as some dance moves in a few competitions. Performances by The Wildcat Dancers, cheerleading team, and Ataxia brought the energy and school spirit that the event needed.

Students had the opportunity to participate in some competitions throughout the night where they could win gift cards and a terms worth of textbooks from the bookstore.

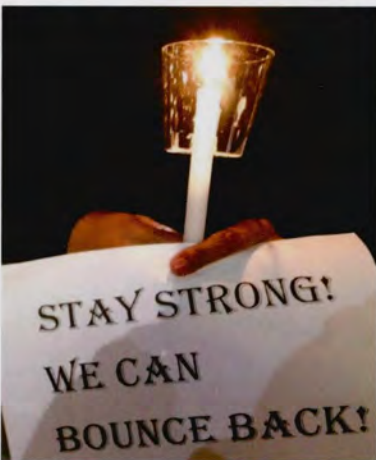




HOLIDAY HOOPLAH

Holiday Hoopla was a new event celebrated this year in place of the traditional Celebration of Light. Clubs and organizations set up in Pepsi Forum to bring some holiday cheer and offer fun activities for students to enjoy. Hillel, Indian Student Association, UIB: Campus Events, and SGA were just a few that were in attendance to bring holiday greetings to all.

The JWU Vocal Ensemble sang carols and the Pep Band played holiday songs to get everyone in the spirit. Students could decorate a penguin, snowman and picture frame, play dreidel, or grab a photo in an inflatable snow globe. Students could keep warm indoors and enjoy holiday themed cookies and hot chocolate.



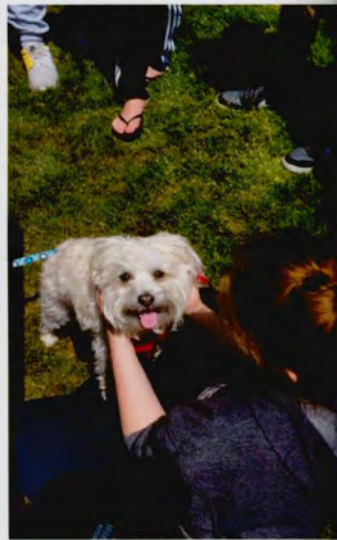


HOLI FESTIVAL/NEPAL VIGIL

After the unfortunate earthquake in Nepal, the organization Namaste Nepal, held a vigil in Gaebe Commons to honor the lives that were lost and send out prayers and positivity to the people of Nepal. Students gathered together at a candle lighting in support of Nepal.

The Holi Festival is an annual event from the Indian Student Association that promotes a message of love, peace and friendship. In its sixth year here at Johnson & Wales University, the Holi Festival offered students the opportunity to enjoy different aspects of the Indian culture in the forms of music and food. The activities included a dunk tank, a water slide inflatable, and the infamous color celebration in which students threw packets of colored chalk in the air to create a beautiful and stunning display on campus.

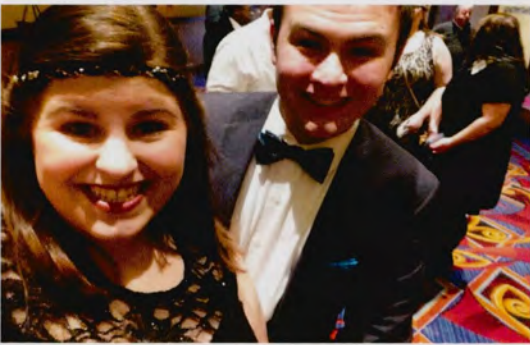
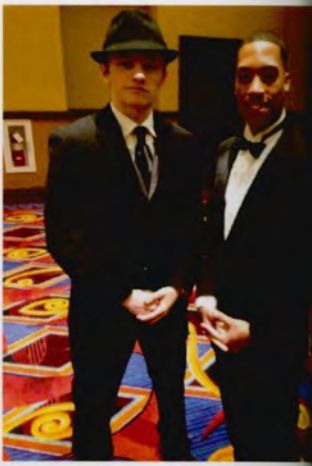
This year's Holi Festival donated t-shirt sales to the Nepal Earthquake Relief Fund to support relief efforts in Nepal.

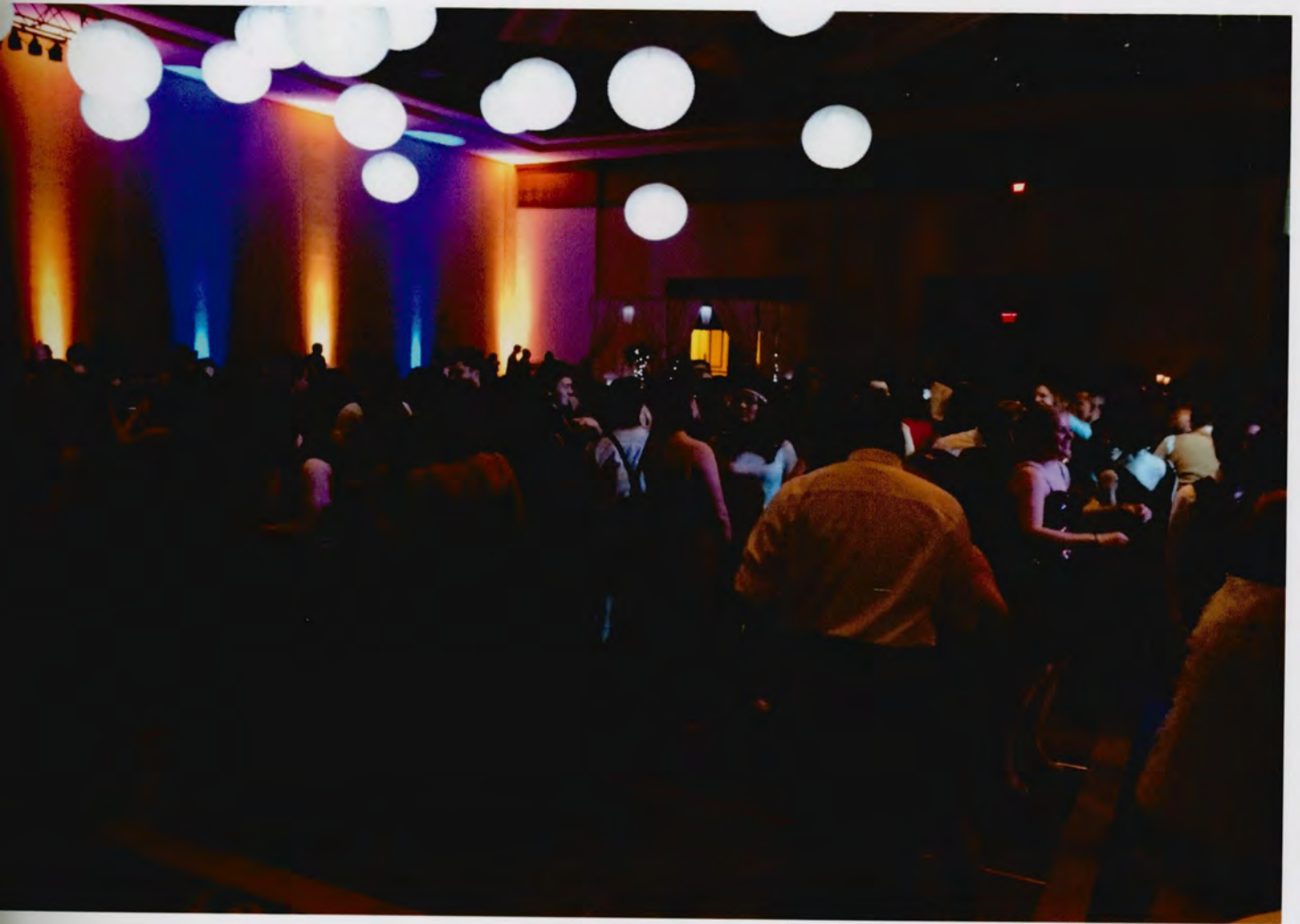




PAWS TO DE-STRESS

This year, the Student Government Association brought a brand new event to campus: Paws to Destress. The event was held at the end of the winter and spring trimesters to help take away the stress of finals from the students. Therapy dogs were the main feature of this event, as they played with students and posed for many pictures. The event also consisted of other clubs and organizations offering activities to help de-stress the student body, and raffles to win Johnson & Wales gear.





SNOBALL

SnoBall is an annual formal dance and reception from UIB Campus Events as a part of their Winter Week celebrations and held at Twin River Casino. This year's theme was based on the Great Gatsby, with students wearing flapper dresses and some wearing bowtie and suspenders, many students went all-out for this year's event.

Selling out tickets for the second year in a row, SnoBall is without a doubt one of the most popular events of the academic year. Aside from the music and dancing, the food selection is always one of the most popular draws. This year, UIB offered a mashed potato bar, lo mein and "taste of the island" bars. For dessert, a cheese cake bar was also offered. This year's SnoBall drew in over 400 guests, which is more than any party Jay Gatsby could ever throw.





RELAY FOR LIFE

Relay for Life events are held at high schools and college campuses across the nation, and here at JWU it is celebrated annually to provide support for a community in their fight against cancer. Clubs and organizations, as well as individuals, who are dedicated to the cause help fundraise and provide fun activities all night long for the event, which is held in the main gym of the Wildcat Center. At this year's event students raised nearly \$36,000, far exceeding their original fundraising goal.





BATTLE OF THE CAMPUS

Battle of the Campus celebrated its 31st year, making it out of the longest running traditions on campus. At Battle of the Campus, 23 teams of students and faculty competed in field day activities that included tug of war, egg toss, sack racing, pyramid building, and the art war where students were tasked with creating an original piece of artwork on canvas that represented the Wildcat Way.

In what has become an annual tradition at Battle of the Campus, before the activities begin teams are lined up on the athletic fields to form the year the event is taking place. This year, over 360 participants lined up to form a 2015, spread across the athletic field.





WAHOO WEEKEND

Are you made for the 90's? This year's theme for UIB: Campus Event's Founders Week invoked the true 90's spirit, with throwbacks to Full House, Open Mic night, comedians, and a 90's @ Nite event. Students had the opportunity to see comedian Dave Coulier perform in the Wildcat Center for the 90's @ Nite event, and then create their own Nickelodeon slime, LipSmackers lip gloss, take part in trivia, and a 90's themed photo booth. Comedian Melissa Villasenor also performed in Schneider Auditorium.

This year's Wahoo Carnival was filled with great rides, fun activities, photo booths, and food trucks. UIB was able to invite We The Kings to perform for a crowd of over 1,000 as well. In total 3,000 students and guests were in attendance at the carnival to experience all the fun, food trucks and rides UIB had to offer.

JERSEY SHORE

ALTERNATIVE SPRING BREAK
JOHNSON & WALES UNIVERSITY
2015





ALTERNATIVE SPRING BREAK

This year, Johnson & Wales participated in its second annual Alternative Spring Break. During this year's spring break, a group of students returned to the Jersey Shore to rebuild houses that were still damaged from Hurricane Sandy in 2012.

Thanks to these students, families who were affected by Hurricane Sandy now have repaired homes and can live comfortably again. The JWU Alternative Spring Break group once again left a strong impact on the Jersey Shore area.

NEWMAN CIVIC FELLOWS AWARD
EMILY WILLIAMS

FEINSTEIN "ENRICHING AMERICA" AWARD
LORRAINE SANCHEZ
PEACE, LOVE & BREAD

THE CENTENNIAL WOMEN IN LEADERSHIP AWARD
ELENA MELEKOS

THE WILDCAT SPIRIT AWARD
STUDENT ATHLETE ADVISORY COMMITTEE

THE EXEMPLARY CITIZEN AWARD
KEVIN WALTON
SOMPETCH (PACK) KATISOMSAKUL

THE EMERGING LEADER OF THE YEAR AWARD
SAMUEL BURGESS

THE NEW STUDENT ORGANIZATION OF THE YEAR AWARD
THE INTERNATIONAL ASSOCIATION OF EXHIBITIONS AND EVENTS (IAEE)

THE OUTSTANDING STUDENT EMPLOYEE AWARD
VALESKA RUIKEN

THE ADVANCING IN LEADERSHIP AWARD
KARON GREEN
SHAWN RIENDEAU

THE STUDENT ORGANIZATION SUPPORT AWARD
THE BRIDGE CENTER

THE EDUCATIONAL PROGRAM OF THE YEAR
"WHAT IS LOVE" - OMEGA PHI BETA

SORORITY OF THE YEAR
DELTA PHI EPSILON

ADVISOR OF THE YEAR
MATTHEW SAMEL

THE CULTURAL PROGRAM OF THE YEAR AWARD
DIVERSITY AT THE UNIVERSITY - UIB CAMPUS EVENTS

CAMPUS PROGRAM OF THE YEAR
MYSTERY BASKET AND RAMON NOODLE COMPETITIONS - COOKING ASIA

STUDENT ORGANIZATION OF THE YEAR
INDIAN STUDENT ASSOCIATION (ISA)

THE SENIOR SERVICE AWARD
BENJAMIN KANTOR

2015 STUDENT LEADER OF THE YEAR AWARD
LAUREN FOLIGNO





LEADERSHIP AWARDS

Every year, Student Involvement and Leadership hosts the Leadership Awards to recognize the contributions of individuals and organizations to the Johnson & Wales community. This year's awards were given to students who embody every aspect of The Wildcat Way: Pride, Courage, Character, and Community.

ETIENNE CHANDLER FRATERNITY & SORORITY LIFE SPIRIT
AWARD
DELTA PHI EPSILON

EXCELLENCE IN COLLABORATION
SIGMA LAMBDA UPSILON SORORITY, INC.

EXCELLENCE IN COMMUNITY SERVICE - SINGLE PROGRAM
#LUNCHBAG - KAPPA ALPHA PSI

MOST IMPROVED CHAPTER AWARD
KAPPA SIGMA

PROGRAM OF THE YEAR AWARD
JWU VOICES - SIGMA LAMBDA UPSILON SORORITY, INC.

EXCELLENCE IN PROGRAMMING AWARD
SIGMA LAMBDA UPSILON SORORITY, INC.

OUTSTANDING CHAPTER PRESIDENT AWARD
MORGAN MAJESKI - SIGMA SIGMA SIGMA

OUTSTANDING NEW MEMBER AWARD
SAMANTHA LEVESQUE - DELTA PHI EPSILON

CHAPTER ADVISOR OF THE YEAR AWARD
MICHAEL SABITONI - DELTA SIGMA PHI FRATERNITY

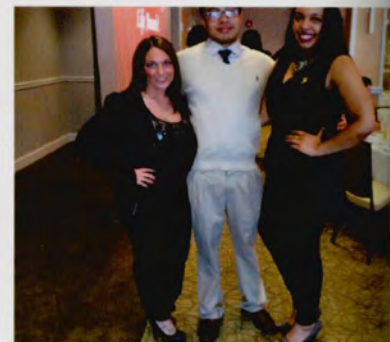
IFC FRATERNITY MAN OF THE YEAR AWARD
STEVEN NGO - THETA DELTA CHI

NPHC PERSON OF THE YEAR
JERHAMY POW - PHI BETA SIGMA FRATERNITY, INC.

UCC PERSON OF THE YEAR
JHANE THOMAS - SWING PHI SWING SOCIAL FELLOWSHIP

THE HOLLY NORMOYLE PANHELLENIC WOMAN OF THE YEAR
AWARD
CARA CUTAIA - SIGMA DELTA TAU

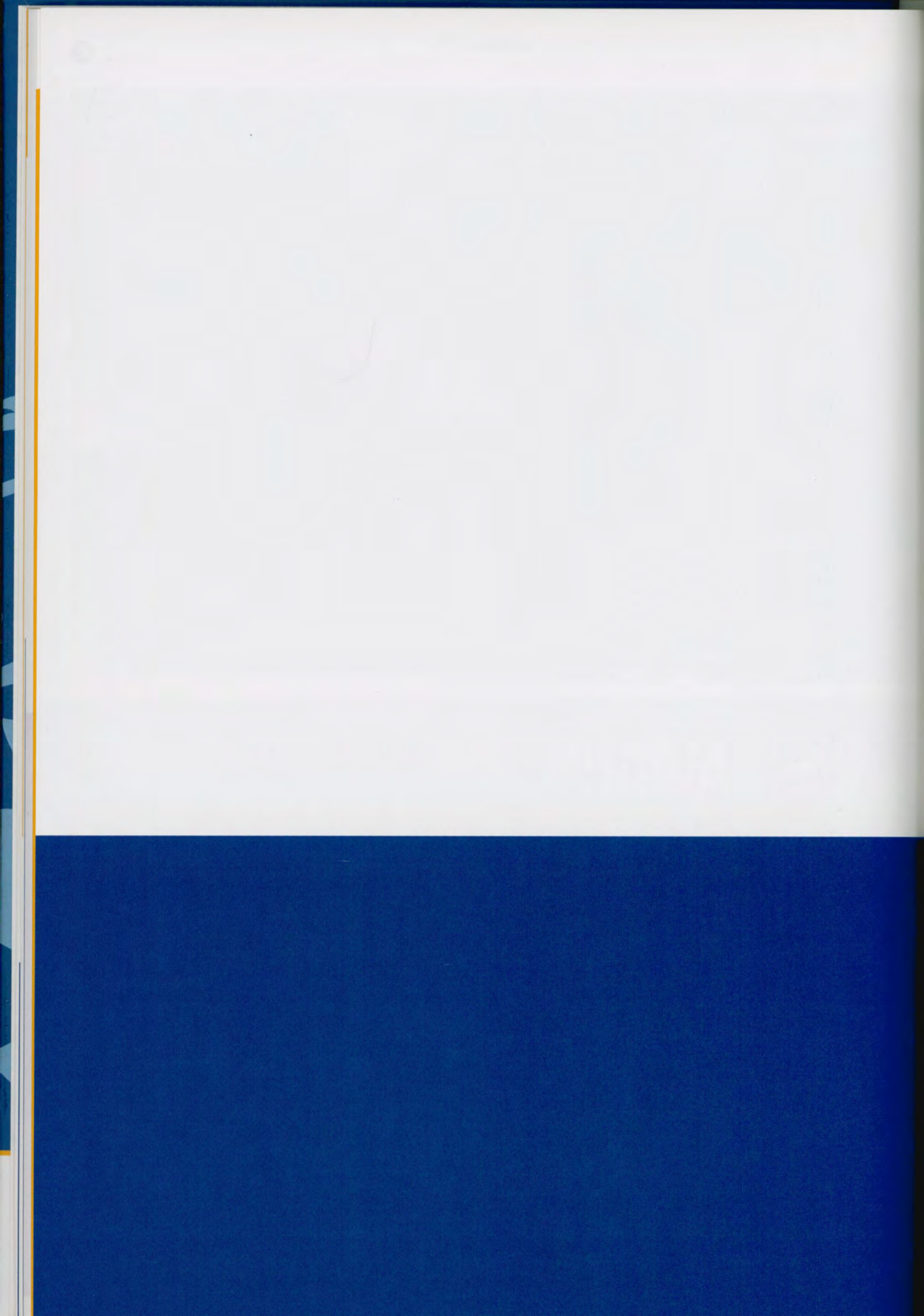
THE MOST VALUABLE MEMBER AWARD
EMILY LOGAN - DELTA PHI EPSILON





GREEK AWARDS

Every year, Fraternity & Sorority Life is honored through the Greek Awards. Fraternities, Sororities, and Social Fellowships were all recognized for their efforts to better the Johnson & Wales community. Individual members were also recognized for their dedication and contributions to their organizations.



CLUBS & ORGANIZATIONS



44

ACADEMIC

48

SPECIAL INTEREST

45

CULINARY

49

STUDENT GOVERNMENT

46

CULTURAL & RELIGIOUS

50

THE CAMPUS HERALD

47

FRATERNITY & SORORITY LIFE



ACADEMIC

Accounting Association, Advertising Club, AIGA, American Marketing Association, Club Managers Association of America, Collegiate Honor Society, Criminal Justice Club, Eta Sigma Delta, Finance & Investment Club, Hospitality Leadership Association (HLA), Institution of Management Accountants (IMA), National Society of Minorities in Hospitality (NSMH), National Student Organizations, Psychology Club, Society for the Human Resource Management, Society for the Advancement of Management (SAM), SOFT Industry Career Explorers, Students Working to Innovate Future Technology (SWIFT), Women in Computer Science (WICS)



CULINARY

American Culinary Federation Competition Club, Bacchus Society, Charcuterie Club, Club of Culinary Excellence, Cooking Asia, Culinaria Latina, Food Science Club, Escoffier Club, JBrew, Modernist Cuisine Club, Nutrition Society, Operation: Peace, Love & Bread, Pastry Arts Club, Sans Gluten, Special Functions Club



CULTURAL & RELIGIOUS

Black Student Alliance, Caribbean Student Association, Chinese Christian Joy Fellowship (CCJF), Chinese Student and Scholar Association, Christian Student Fellowship, Cultural Connections Club, Hillel, Indian Student Association, Inter-Varsity, JWU-Taiwanese Student Association, Korean Student Association, Namaste Nepal, Newman Club, Reformed University Fellowship (RUF), Saudi Club



FRATERNITIES, SORORITIES & SOCIAL FELLOWSHIPS

Interfraternity Council (IFC): Delta Sigma Phi ($\Delta\Sigma\Phi$), Kappa Sigma ($\text{K}\Sigma$), Phi Sigma Kappa ($\Phi\Sigma\text{K}$), Sigma Alpha Mu (ΣAM), Tau Epsilon Phi ($\text{TE}\Phi$), Theta Delta Chi ($\Theta\Delta\text{X}$) National Pan-Hellenic Council (NPHC): Kappa Alpha Psi ($\text{K}\text{A}\Psi$), Phi Beta Sigma ($\Phi\text{B}\Sigma$), Sigma Gamma Rho (ΣGR), Zeta Phi Beta ($\text{Z}\Phi\text{B}$) Pan-Hellenic Council (PC): Alpha Sigma Tau ($\text{A}\Sigma\text{T}$), Delta Zeta (ΔZ), Delta Phi Epsilon ($\Delta\Phi\text{E}$), Sigma Sigma Sigma ($\Sigma\Sigma\Sigma$), Sigma Delta Tau ($\Sigma\Delta\text{T}$) United Cultural Council (UCC): Groove Phi Groove ($\text{G}\Phi\text{G}$), Swing Phi Swing ($\text{S}\Phi\text{S}$), Lambda Upsilon Lambda ($\Lambda\text{Y}\Lambda$), Omega Phi Beta ($\Omega\Phi\text{B}$), Sigma Lambda Upsilon ($\Sigma\Lambda\text{Y}$) Order of Omega



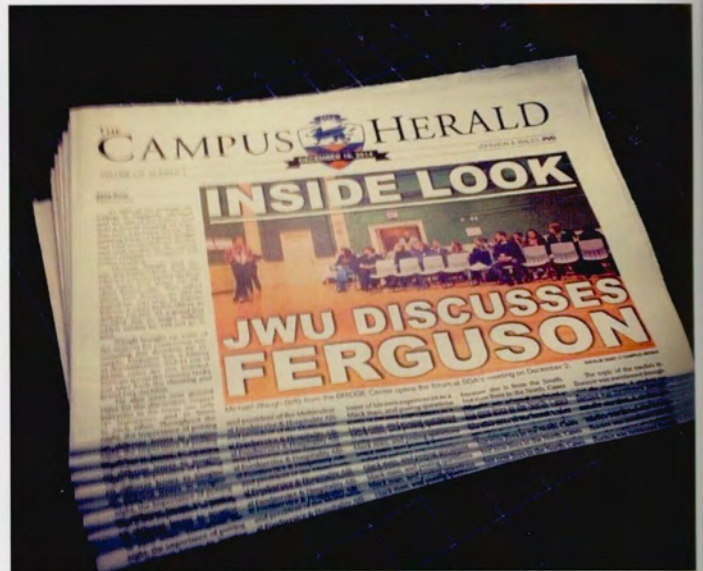
SPECIAL INTEREST

Ataxia, Badminton & Ping Pong Club, College Against Cancer, College Libertarians (CLJWU), College Republicans, Collegiate Entrepreneurs Organization (CEO), Circle K (CKI), Disney Alumni, Global Citizen Program (GCP), Great Expectations Social Club (GESOC), Habitat for Humanity, International Association of Exhibitions and Events (IAEE), International Fashion Society, Inter-Residence Hall Association (IRHA), Johnson & Wales Vocal Ensemble, JWU Anime Club, JWU Commuting Wildcats, JWU Law Society, JWU Pep Band, JWU Players, JWU Robotics, JWU Surf Club, Latin & Ballroom Dance Club, Mixed Martial Art (MMA), Omicron Delta Kappa, Outdoor Adventure Club, Photography Club, Pride Alliance, Presidents Page, Ski & Snowboard Club, Special Events Society, Student Activists Supporting Sustainability, (S.A.S.S), Student Alumni Association, Student Athlete Advisory Committee (SAAC), TaeKwonDo, Travel and Tourism Club, Wildcat Dancers



STUDENT GOVERNMENT & PROGRAMMING

Graduate Student Association (GSA), Student Government Association (SGA), University Involvement Board (UIB)



STUDENT MEDIA

Broadcasting Club, The Campus Herald (Student Newspaper), 2014 Johnsonian





ATHLETICS



MEN'S BASEBALL



SECOND PLACE REGULAR SEASON FINISH WITH A 10-4 GNAC RECORD

JAKE MARCHESSEAU WAS NAMED TO THE GNAC ALL-CONFERENCE FIRST TEAM



SOFTBALL



WON FIRST GNAC CHAMPIONSHIP IN PROGRAM'S HISTORY; QUALIFIED FOR THE NCAA TOURNAMENT

12 PLAYERS WERE NAMED ALL-AMERICA SCHOLAR ATHLETES

MEN'S BASKETBALL



ADVANCED TO THE 2015 CHAMPIONSHIP GAME

QUARRY GREENAWAY BECAME THE SECOND FASTEST WILDCAT TO JOIN THE 1,000 POINT CLUB



WOMEN'S BASKETBALL



GNAC CHAMPIONS AND NCAA TOURNAMENT APPEARANCE, BOTH FIRSTS IN PROGRAM HISTORY

SET SEASON WIN RECORD WITH 19 WINS



MEN'S CROSS COUNTRY



GNAC CHAMPIONS
ADAM SACHS FINISHED FIRST PLACE OVERALL IN THE GNAC AND WAS NAMED GNAC CONFERENCE RUNNER OF THE YEAR

WOMEN'S CROSS COUNTRY



CAPTURED FOURTH PLACE IN THE GNAC
KRISTEN CARSELLI (7TH) AND KRISTEN DECESARE (9TH) FINISHED IN THE TOP 10 AT THE GNAC CHAMPIONSHIPS

MEN'S GOLF

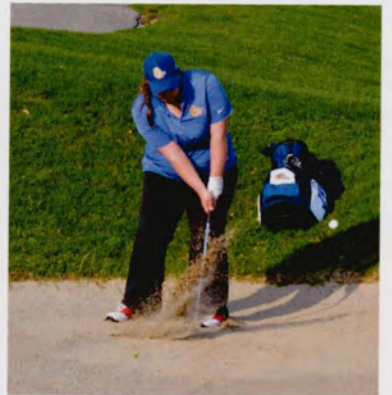


**FINISHED SECOND IN GNAC
CONFERENCE CHAMPIONSHIP**

**RECEIVED THE GNAC
INSTITUTIONAL SPONSORSHIP AWARD**

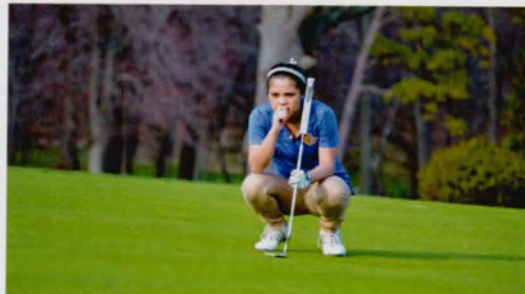


WOMEN'S GOLF



**COMPLETED FIRST YEAR AS A VARSITY
PROGRAM**

COMPETED IN 6 EVENTS



MEN'S LACROSSE



QUALIFIED FOR THE 2015 GNAC MEN'S LACROSSE PLAYOFFS

NICK COPPOLA WAS NAMED 2015 GNAC COACH OF THE YEAR



WOMEN'S LACROSSE



REACHED GNAC TOURNAMENT SEMI-FINALS

BEST START IN PROGRAM HISTORY WITH A 10-GAME WINNING STREAK

MEN'S SOCCER



BACK-TO-BACK GNAC CHAMPIONS

REGULAR SEASON GNAC CHAMPIONS



WOMEN'S SOCCER

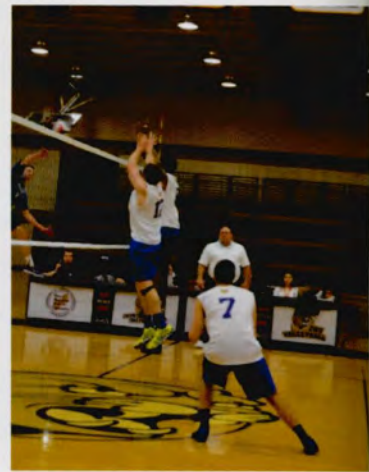


CRAFTED A 6-4-1 GNAC RECORD, FINISHING 6TH IN THE CONFERENCE

SHANNON FEULNER WAS NAMED TO THE GNAC ALL-SPORTSMANSHIP TEAM



MEN'S VOLLEYBALL



FIRST 20-WIN SEASON IN PROGRAM HISTORY

JJ BESSETTE BECAME THE CAREER ALL-TIME ASSIST LEADER

WOMEN'S VOLLEYBALL



UPSET #1 SEED TO ADVANCE TO GNAC CHAMPIONSHIP MATCH FOR THE FIRST TIME SINCE 2010

ALYSSA DRAPEAU NAMED TO THE GNAC ALL-SPORTSMANSHIP TEAM

MEN'S TENNIS



TAYLOR FARMER NOMINATED AS GNAC ROOKIE OF THE YEAR

JASON CHAVENSON NAMED TO THE GNAC ALL-SPORTSMANSHIP TEAM



WOMEN'S TENNIS

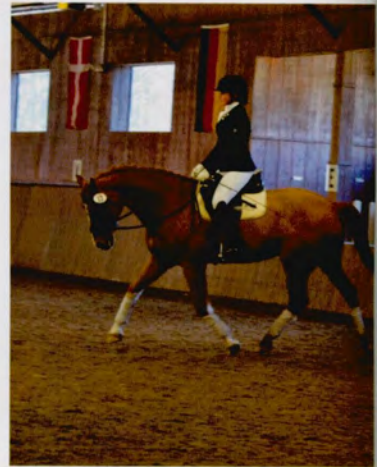


ADVANCED TO GNAC CHAMPIONSHIP MATCH

MORGAN THOMPSON AND SAMMY JO BORR NAMED GNAC ALL-CONFERENCE FIRST TEAM DOUBLES



EQUESTRIAN



IDA TEAM 2014-15 REGION A CHAMPIONS, FIRST TIME IN THE PROGRAM'S HISTORY

IHSA TEAM HAD 3 FIRST PLACE FINISHES IN 9 REGULAR SEASONS

ICE HOCKEY



DEFEATED FREDONIA FOR THE FIRST TIME IN PROGRAM HISTORY BEFORE 2,400 FANS AT THE DUNKIN DONUTS CENTER

BEN BROUILLARD RECEIVED ALL-ECAC HONORABLE MENTION

SAILING



PLACED IN TOP 5 IN ALL REGATTAS THIS SEASON

ONLY TEAM IN JWU ATHLETICS HISTORY WITH ALL MEMBERS NAMED TO DEAN'S LIST IN SAME SEMESTER



FIELD HOCKEY

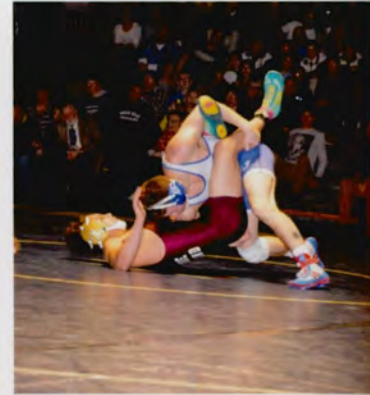


BEST SEASON IN SCHOOL HISTORY WITH 13 WINS AND A 3RD PLACE FINISH IN THE GNAC

FIRST PLAYOFF WIN AGAINST RIVIER



WRESTLING



MICHAEL FERINDE BECAME TWO-TIME ALL-AMERICAN, PLACING EIGHTH AT THE NCAA NATIONAL CHAMPIONSHIPS

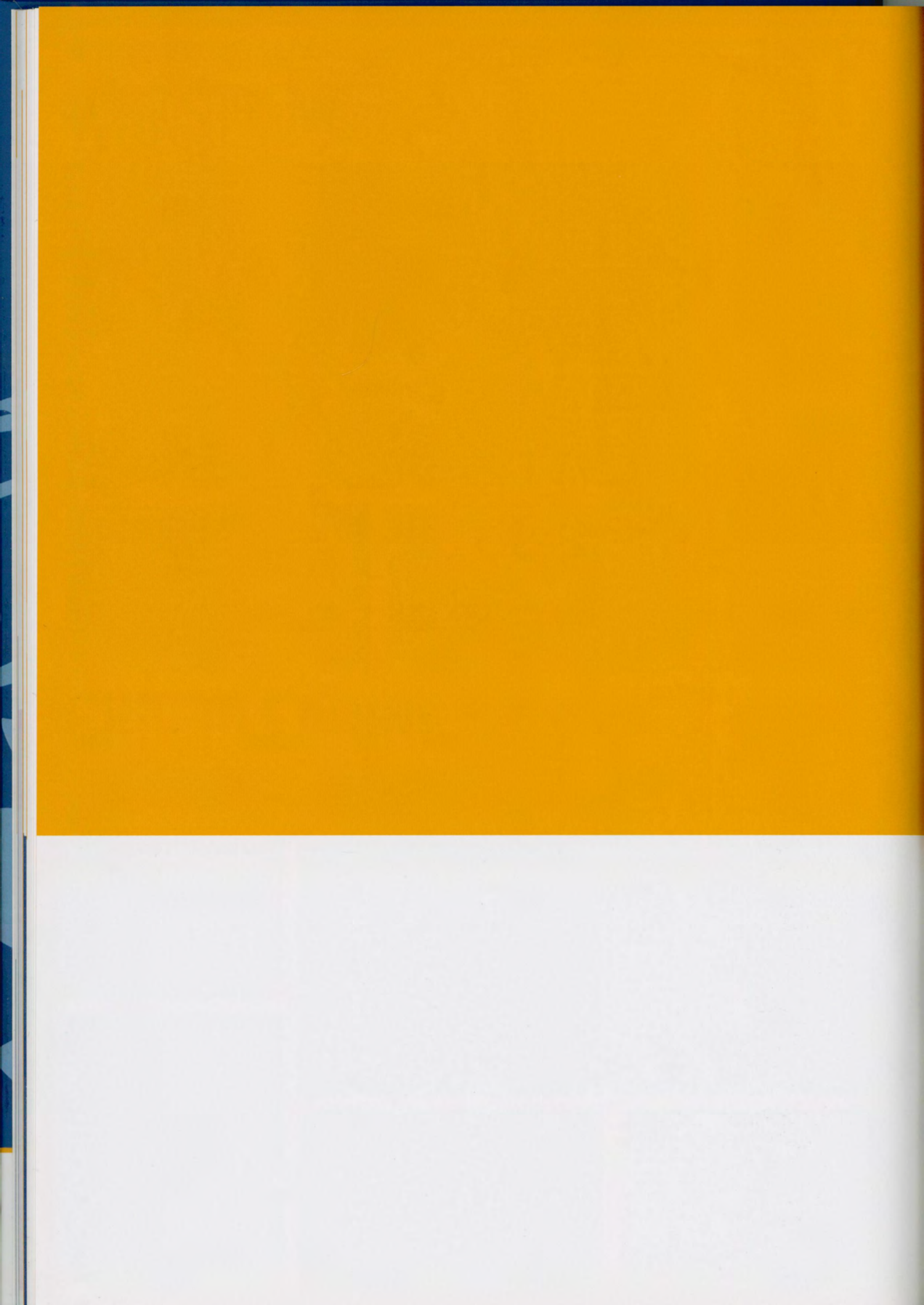
CHEERLEADING



FOURTH CONSECUTIVE FIRST PLACE FINISH IN THE GNAC FINALS

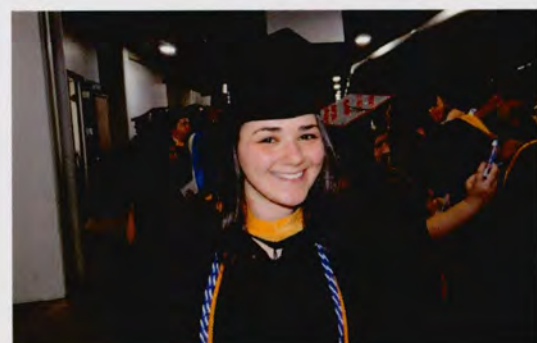
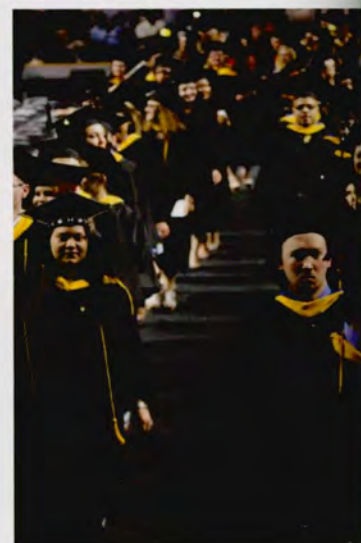
CAPTURED FIRST PLACE CO-ED DIVISION

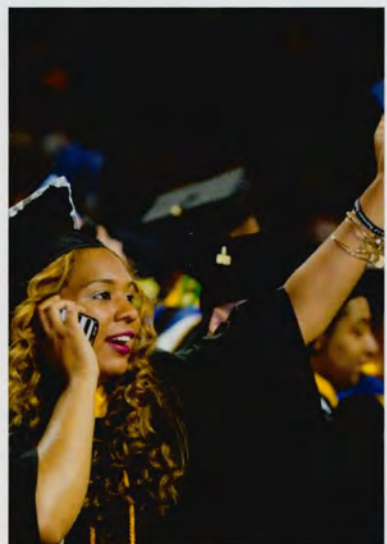
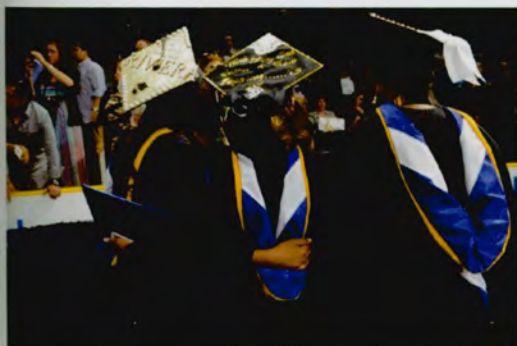




COMMENCEMENT

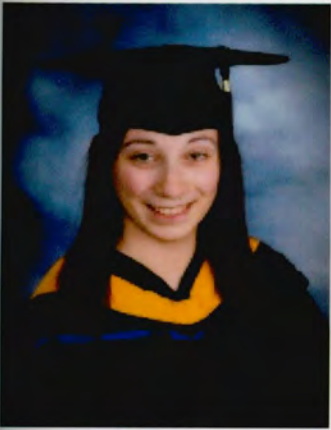






CLASS OF 2015





NICOLE ABOUAKAR
EVENT MANAGEMENT



VICTORIA ABRAMO
CRIMINAL JUSTICE



ERIC ACKERMAN
HOTEL & LODGING



MARILYN ACLOQUE-ANDRE
CULINARY ARTS



ADEWALE ADENIYI
ADVERTISING
MARKETING



JUSTIN AGNER
CULINARY ARTS



GULEM AKCAY
INTERNATIONAL HOTEL & LODGING
MANAGEMENT



KATHERINE AKIKIE
CRIMINAL JUSTICE



AKINTUNDE AKINPELU
MAJOR



TURKI AL HASSAN
ELECTRONIC ENGINEERING



NAIF ALDOUSARI
MARKETING & ADVERTISING
COMMUNICATIONS



TURNER ALLEN
FASHION MERCHANDISING



JOHN ALLENSON JR.
NETWORK ENGINEERING



MARAM ALMANEEA
MARKETING
COMMUNICATIONS



AMMAR ALSAMA
ELECTRONIC ENGINEERING



ROSIE AMAROSO
FOOD SERVICE MANAGEMENT



ADAM ANDERSON



ALIX ANTOINE JR.
CRIMINAL JUSTICE



STEPHEN ARAHOVITES
BUSINESS MANAGEMENT



CRYSTAL ARCHER
BAKING & PASTRY ARTS



KARIN ARIES
CULINARY NUTRITION



ANNEMARIE ARTHURS
ENTREPRENEURSHIP



SARAH ELIZABETH AUBRECHT



ANGIE AVILA
MBA BUSINESS ADMINISTRATION



CARLOS AYALA JR.
CULINARY ARTS



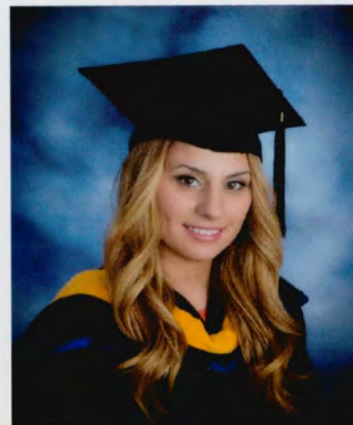
IAN BABARULA
CULINARY ARTS
FOOD SERVICE MANAGEMENT



ROHAN BADRI
INFORMATION TECHNOLOGY



CAITLIN BAILEY
TRAVEL & TOURISM



FULYA BAKIR
HOTEL MANAGEMENT



MICHAEL BARJUDINAS
FOOD SERVICE MANAGEMENT



DANIELLE BARLOW
COUNSELING PSYCHOLOGY



ASHLEY BARONE
CULINARY ARTS



ANAN BATOOL
ACCOUNTING



LYNDSAY BAUER
SPORTS MANAGEMENT



CHERISH BELL
FASHION MERCHANDISING



DAINANDA BERNADEAU



AMRIT BHOJWANI
HOTEL & LODGING



JULIA BICA
BUSINESS MANAGEMENT



PETER BILODEAU
CULINARY ARTS
FOOD SERVICE MANAGEMENT



AMANDA BLAKE
HOSPITALITY



LAURA BLIER
BUSINESS



MATTHEW BONACASA
HOTEL & LODGING



CHERYL BONACCI
BAKING & PASTRY ARTS



ALLISON BONFIGLIO
FOOD SERVICE MANAGEMENT



YANITZA BONILLA
CULINARY ARTS
FOOD SERVICE MANAGEMENT



AMBER BOULWARE
INTERNATIONAL TRAVEL & TOURISM
MANAGEMENT



KENDRA BOWE
SPORTS/ENTERTAINMENT/EVENT
MANAGEMENT



RAYMOND BRANCO
SPORTS/ENTERTAINMENT/EVENT
MANAGEMENT



JELEZCE BRISTOL
BAKING & PASTRY ARTS



FRANCESCA BRODEUR
SPORTS/ENTERTAINMENT/EVENT
MANAGEMENT



BEAUTIFUL BROWN
FOOD SERVICE MANAGEMENT



SAMRASH BROWN
INTERNATIONAL BUSINESS



TURQUOISE BROWN
INTERNATIONAL HOTEL & LODGING
MANAGEMENT



TYLER BROWN
FINANCE



TIMOTHY BRUNDRETT
ENGINEERING



ORIN BURG
SPORTS/ENTERTAINMENT/EVENT
MANAGEMENT



NA'KIA BURRELL
CULINARY ARTS



COURTNEY BUTLER
HOTEL & LODGING



MICHELLE CABRERA
BAKING & PASTRY ARTS



PAULA CADMAN-MENDOZA
HOTEL & LODGING
SALES, MEETING & EVENT MANAGEMENT



JENNA CAFONE
FASHION MERCHANDISING



ERIN CAIN
FOOD SERVICE MANAGEMENT



VALERIE CAMILLE
INTERNATIONAL HOTEL & LODGING
MANAGEMENT



YADIRIA CAMPOS
INTERNATIONAL BUSINESS



GABRIELA CAMPOS ANDINO



JAMES CANDIDO
FOOD SERVICE MANAGEMENT



EMILY CAPOLUPO
CULINARY NUTRITION



SHANE CAREW
FOOD SERVICE MANAGEMENT



LUISA CARIDAD
FASHION MERCHANDISING



FRANK CARRIERI
BAKING & PASTRY ARTS
FOOD SERVICE MANAGEMENT



KAITLIN CARROLL
LIBERAL STUDIES



JESSICA CASAS
CRIMINAL JUSTICE



ALLYSON CASTIGLIA
FASHION MERCHANDISING



ERWINS CAZEAU
CULINARY ARTS
FOOD SERVICE MANAGEMENT



ALEXANDER CELIA
CULINARY ARTS
FOOD SERVICE MANAGEMENT



CHE-WEI CHANG
HOTEL & LODGING



AMANDA CHAVEZ
INTERNATIONAL BUSINESS



CAROL CHAVEZ
SPORTS/ENTERTAINMENT/EVENTS
MANAGEMENT



JINGSI CHEN
MBA HOSPITALITY



MANZHEN (ANGEL) CHEN
HOTEL & LODGING



DAVID CHERO
COUNSELING PSYCHOLOGY



KRISTA CHRISTENSEN
RESTAURANT, FOOD AND BEVERAGE
MANAGEMENT



LUCY CHU
HOTEL & LODGING



PEI-NING CHUNG
HOSPITALITY



YI-HSUN CHUNG
HOSPITALITY



BRIANNE CIDRAS
CULINARY ARTS
NUTRITION



CAROLINE CHRISANO
FOOD SERVICE MANAGEMENT



BENJAMIN CLARK
HOTEL & LODGING



BRIAN CLARKE
HOSPITALITY



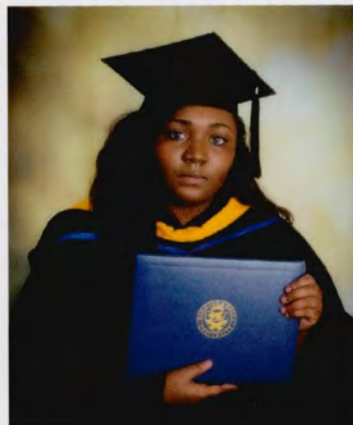
ERIKA CLARKE
CULINARY ARTS
FOOD SERVICE MANAGEMENT



KEYA CLARKE
ACCOUNTING



EVELYN COHEN
INTERNATIONAL BUSINESS



DOMINIQUE COLBERT
CRIMINAL JUSTICE



LINDSAY COLEMAN
SPORTS/ENTERTAINMENT/EVENT
MANAGEMENT



LAUREN COLLINS
CRIMINAL JUSTICE



RODNEY COLLINS
CULINARY ARTS



ALEXANDRA CORTESE
INTERNATIONAL TRAVEL & TOURISM
MANAGEMENT



STEFANIE COSTAS
HOTEL & LODGING



TIFFANY COURTEMANCHE
FINANCE



MARKHAYA CRAWFORD



WILLIAM CRUZ
FOOD SERVICE MANAGEMENT



DANILO CUEVAS
CULINARY ARTS
FOOD SERVICE MANAGEMENT



GAIL CUNNINGHAM
CRIMINAL JUSTICE



SHANIQUE CUNNINGHAM



JORDAN CURCIO
SPORTS/ENTERTAINMENT/EVENT
MANAGEMENT



KARINA CURCIO
CULINARY ARTS
ENTREPRENEURSHIP



ZAMIR DAKI
TRAVEL & TOURISM MANAGEMENT
HOSPITALITY



VANESSA DASILVA
CRIMINAL JUSTICE



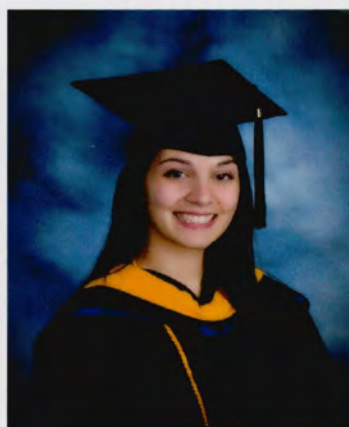
MICHAEL DAVIS
LIBERAL STUDIES



LAURA DAY
SPORTS/ENTERTAINMENT/EVENT
MANAGEMENT



ROSARIO DE LA GARZA
FASHION MERCHANDISING
RETAIL MARKETING



KRISTEN DECESARE
NUTRITION



NICHOLAS DELANEY
ADVERTISING
MARKETING



MARITZA DEOSA
COUNSELING PSYCHOLOGY



JOHN DESALVO
RESTAURANT, FOOD & BEVERAGE
MANAGEMENT



FATOUMATA DIENTA
FINANCE



TAYLA DIFRANCESCO
FASHION MERCHANDISING
RETAIL MARKETING



KRYSTAL DIGIOVANNI
MARKETING



DERREK DIPIETRO
BUSINESS MANAGEMENT



KELSEY DOWNEY
CULINARY ARTS
NUTRITION



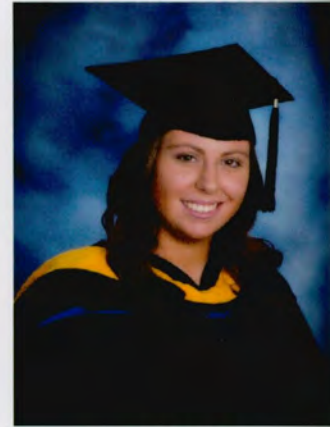
ANDREW DOYLE
BUSINESS



COREY DUBUSSON
SPORTS/ENTERTAINMENT/EVENT
MANAGEMENT



ANN DUFF
BUSINESS



JULIE DUGGAN
MARKETING



ALEXA DUQUETTE
INTERNATIONAL BUSINESS



JUSTIN DURE
CRIMINAL JUSTICE



SANDRA DZIADKOWIEC
INTERNATIONAL BUSINESS



DENNIS DZIEDZIC
TRAVEL & TOURISM MANAGEMENT



CALVIN ENG
CULINARY ARTS



ALYSSA ERB
HOTEL & LODGING



KAYLA EREIO-DAVIS
CRIMINAL JUSTICE



SAMANTHA ESPOSITO
SPORTS/ENTERTAINMENT/EVENT
MANAGEMENT



STEPHANIE ESTRADA
CRIMINAL JUSTICE



TAMOKO ETO
CULINARY ARTS
NUTRITION



KRYSTAL EVELYN
CULINARY ARTS



KRETA EVERTSZ
MARKETING



ROCCO FACCONI
HOTEL & LODGING



ANNA FALL
INTERNATIONAL BUSINESS



REENA FELIX
SPORTS/ENTERTAINMENT/EVENT
MANAGEMENT



TRE FERNANDES
CULINARY ARTS



MICHAEL FERRANTI
NETWORK ENGINEERING



CATHERINE FIORILLO



GEORGE FISHER
HOTEL & LODGING



JESSICA FLORIO
SPORTS/ENTERTAINMENT/EVENT
MANAGEMENT



CHANDRA FOGG
TRAVEL & TOURISM
HOSPITALITY



PERRY FOGG
CULINARY ARTS
FOOD SERVICE MANAGEMENT



KELSEY FOX
HOTEL & LODGING



ASHLEY FUDALA
SPORTS/ENTERTAINMENT/EVENT
MANAGEMENT



VICTOR FUENTES
BUSINESS MANAGEMENT



MEGAN GALLAGHER
SPORTS/ENTERTAINMENT/EVENT
MANAGEMENT



SARAT GANAPATHIRAJU
HOTEL & LODGING



ELIZABETH GARD
HOTEL & LODGING



ANTHONY GARRAMONE
CRIMINAL JUSTICE



MICHAEL GEISE
CULINARY ARTS
FOOD SERVICE MANAGEMENT



KAYLEIGH GEORGE
CULINARY ARTS
FOOD SERVICE MANAGEMENT



WILKENS GEORGES
CRIMINAL JUSTICE



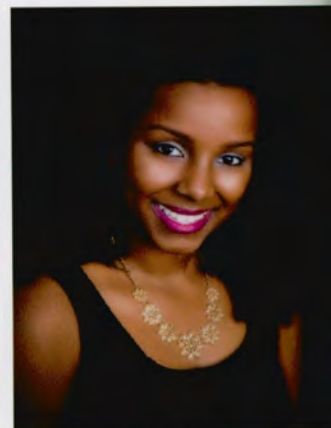
LEONARD GIGANTINO
ENTREPRENEURSHIP



CAROLINA GILBERT
CULINARY ARTS



LAQUINCY GILMORE
CULINARY ARTS
FOOD SERVICE MANAGEMENT



SARAH GIRMA
TRAVEL & TOURISM



BRYAN GIRON



CHRISTINA GODFREY
HOTEL & LODGING



EMILY GODOY
BAKING & PASTRY
FOOD SERVICE MANAGEMENT



NAYDENE GOMES
CRIMINAL JUSTICE



JENNIFER GONELL
HOSPITALITY
TRAVEL & TOURISM



YARITZA GONZALEZ
FOOD SERVICE MANAGEMENT



CATHERINE GOTTLIEB



KRISTIE GRACE
SPORTS/ENTERTAINMENT/EVENT
MANAGEMENT



KERRYANN GRAHAM
CRIMINAL JUSTICE



JALLANDE GREAVES
TRAVEL & TOURISM



JASMINE GRENIER
SPORTS/ENTERTAINMENT/EVENT
MANAGEMENT



DESYREE GUILFU
FOOD SERVICE MANAGEMENT



AIERKEN GULIDANAN
FINANCE



XIADYING GUO
HOSPITALITY



BRIAN GWOZDZ
FOOD & BEVERAGE MANAGEMENT



CARISA HAMILTON
BAKING & PASTRY



JI HAN
FOOD & BEVERAGE MANAGEMENT



JI HEUI HAN
FOOD & BEVERAGE MANAGEMENT



BRITNEY HANEY



MATTHEW HARKER
CULINARY NUTRITION



GAVIN HART
CULINARY
FOOD SERVICE MANAGEMENT



EMILY HATTUB
ADVERTISING
MARKETING



KACI HAYES
FASHION MERCHANDISING



GE HE
HOTEL & LODGING



TAYLOR HEIN
HOTEL & LODGING



DONALD HENGLEIN
HOTEL & LODGING



NICHOLAS HERRMANN



SAMANTHA HIRSCHFIELD
HOSPITALITY



FARRELL ANN HOLLERAN
SPORTS/ENTERTAINMENT/EVENT
MANAGEMENT



ANDREW HOOKS
CULINARY ARTS



CHARLIE HOURN
FOOD SERVICE MANAGEMENT



SHAMAR HOWARD
CULINARY ARTS



YA-CHUN HSU
MBA HOSPITALITY



YESINIA HUA
CULINARY ARTS



RUIXIANG HUANG
HOSPITALITY



CASSIDY HUBBARD
CULINARY ARTS
NUTRITION



CARA IMBARRATO
HOTEL & LODGING



JIANAN JANG
HOTEL & LODGING



KATHLEEN JARDIM
SPORTS/ENTERTAINMENT/EVENT
MANAGEMENT



JADE JENKINS
INTERNATIONAL BUSINESS



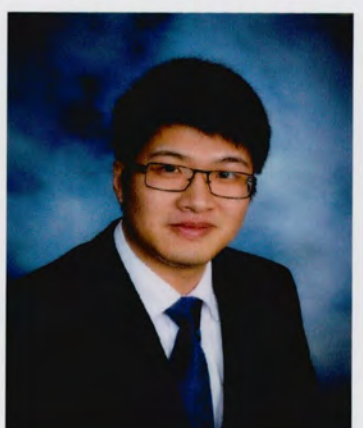
RODERICK JENKINS
FOOD SERVICE MANAGEMENT



MARK JERRICK
SPORTS/ENTERTAINMENT/EVENT
MANAGEMENT



YINI JIANG
HOTEL & LODGING



YI (GENE) JIN
ACCOUNTING



BAI JING
HOSPITALITY



LEAH JONES
BAKING & PASTRY



XAVIER JORDAN
ENTREPRENEURSHIP



BRITTANY JUMONVILLE



TAO JUNDONG
BUSINESS ADMINISTRATION



SUNGJIN KANG
FOOD SERVICE MANAGEMENT



BENJAMIN KANTOR
FINANCE
ACCOUNTING



TZU-TANG KAO
HOSPITALITY



BOJAN KARESKI
CULINARY ARTS



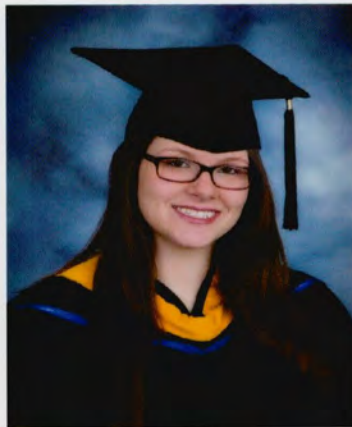
SOMPETCH KATISOMSAKUL



GURSHARN KAUR
RISK MANAGEMENT



ELIZABETH KELLEY
CULINARY ARTS
FOOD SERVICE MANAGEMENT



EMMA KELLY
FOOD SERVICE MANAGEMENT
MEETING & EVENT



LETHIA KENION
CULINARY NUTRITION



SARA KIM
FOOD SERVICE MANAGEMENT



LAUREN KLEIN
BAKING & PASTRY
FOOD SERVICE MANAGEMENT



MELISSA KRAMER
FASHION MERCHANDISING



MONIKA KUCAL
SPORTS/ENTERTAINMENT/EVENT
MANAGEMENT



HSIN-JU KUO
HOSPITALITY



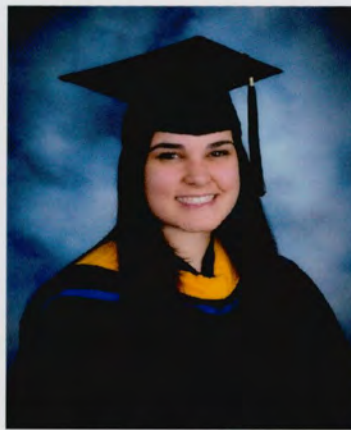
JARYN LAPLANTE
FOOD SERVICE MANAGEMENT



ALICIA LARAMEE
HOTEL & LODGING



OLUWASEUN LARO
HOTEL & LODGING



AMANDA LAURIOLA-SANTOS
FOOD SERVICE MANAGEMENT



KELSEY LAVERNE
FASHION MERCHANDISING



NAIM LEARY
SPORTS/ENTERTAINMENT/EVENT
MANAGEMENT



ALVIN LEE
FOOD & BEVERAGE MANAGEMENT



BRIAN KYUNGYONG LEE
HOTEL MANAGEMENT



JIMIRA LEE
CRIMINAL JUSTICE



JOANNE LEE
FOOD & BEVERAGE



JOHANNE LEGRANDE
CULINARY ARTS



DOMINIQUE LEIVA



ANDREA LEVINE
FASHION MERCHANDISING



SHANIQUE LEWIN
NUTRITION/CULINARY



FLORENCE LI
INTERNATIONAL TRAVEL & TOURISM
MANAGEMENT



HANYI LI
HOSPITALITY



SHAN LI
HOTEL & LODGING



SHANSHAN LI
TRAVEL & TOURISM



SZU-LING LI
MBA HOSPITALITY



CHIEH-YEN LIAO
HOSPITALITY



YUFAN LIAO
RISK MANAGEMENT



Z SHAUN LIAO
HOTEL & LODGING



BROOKE LIEBERMAN
SPORTS/ENTERTAINMENT/EVENT
MANAGEMENT



ANALIZ LIRIANO
COUNSELING PSYCHOLOGY



NATASHA LIRIANO
INTERNATIONAL BUSINESS



SHAILYN LIRIANO
COUNSELING PSYCHOLOGY



CHIA-YI (PEGGY) LIU
HOTEL & LODGING



TSUI-JUNG LIU
HOSPITALITY



NICOLE LOSTACCO
BUSINESS MANAGEMENT



BRITTANY LOMBARDI



BRANDON LOPIHERO
HOTEL & LODGING



DI LOU
GENERAL MBA



JANELLE LOWERY
CULINARY ARTS



CHRISTOPHER LOYCANO
SPORTS/ENTERTAINMENT/EVENT
MANAGEMENT



DEANDRE LUBIN
CUINARY ARTS
FOOD SERVICE MANAGEMENT



KRISTEN LYNCH
SPORTS/ENTERTAINMENT/EVENT
MANAGEMENT



NINA LYNN
CRIMINAL JUSTICE



MEGAN MACALLISTER
BAKING & PASTRY ARTS



NAOMI MADIOU
FOOD SERVICE ENTREPREURSHIP



MYLA MADRIAGA
BAKING AND PASTRY ARTS
FOOD SERVICE MANAGEMENT



CHRISTOPHER MAGBOO
TRAVEL & TOURISM



MYA MALLORY
FASHION MERCHANDISING



ROSHONNA MALONE
INTERNATIONAL HOTEL & TOURISM
MANAGEMENT



TASOS MANALIS
FOOD SERVICE MANAGEMENT



BRITTANY MANFRO
SPORTS/ENTERTAINMENT/EVENT
MANAGEMENT



KYANA MANGOL
CULINARY ARTS
NUTRITION



WILLIAM MANZANO
INTERNATIONAL BUSINESS



JOSEPH MARCUS
CREATIVE ADVERTISING



EMMANUEL MARSEILLE



KAISHA MARTELLY
CULINARY NUTRITION



HANNAH MARTIN
SPORTS/ENTERTAINMENT/EVENT
MANAGEMENT



TYLER MASON
FOOD SERVICE MANAGEMENT



DEIONTE MCALLISTER
CRIMINAL JUSTICE



VICTORIA MCCORMICK
SPORTS/ENTERTAINMENT/EVENT
MANAGEMENT



ANISAH MCGILLIVRAY
SPORTS/ENTERTAINMENT/EVENT
MANAGEMENT



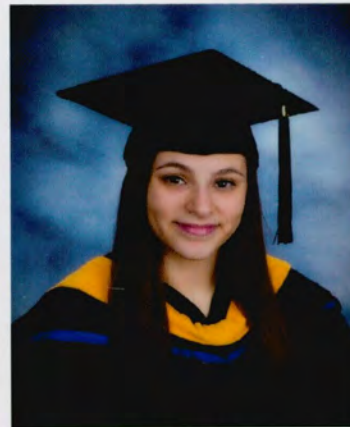
HENRY MCKENNA
MARKETING



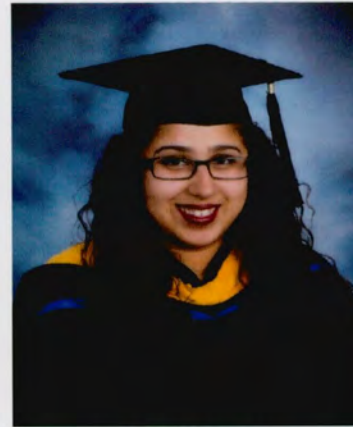
DANNIELLE MCKNIGHT
HOTEL & LODGING
TRAVEL & TOURISM



STEPHEN MCMAHON
ACCOUNTING
BUSINESS MANAGEMENT



ASHLEY MEDINA
CULINARY ARTS
FOOD SERVICE MANAGEMENT



VIANNA MEDINA-CORREIA
CRIMINAL JUSTICE



ELENA MELEKOS
COUNSELING PSYCHOLOGY



WINTER MELSON
BUSINESS ADMINISTRATION



MICHAEL MERCADO
HOTEL & LODGING



KARIN MERCEDES
BAKING & PASTRY ARTS
FOOD SERVICE MANAGEMENT



NICHOLAS MESSIER
SPORTS/ENTERTAINMENT/EVENT
MANAGEMENT



MORGAN METZLER
BAKING & PASTRY ARTS
FOOD SERVICE MANAGEMENT



FENG MIAO
TRAVEL-TOURISM



JESSICA MIAS
FOOD SERVICE MANAGEMENT



ANGELINA MIECH
MANAGEMENT



SHIRRELL MILLER
CULINARY ARTS



BRIELLE MINUTILLO
BAKING & PASTRY ARTS



MEGHAN MOLOUGHNEY
BAKING & PASTRY ARTS
FOOD SERVICE MANAGEMENT



KIARA MORMAN
CRIMINAL JUSTICE



MELISSA MORVEY
CRIMINAL JUSTICE



TONI-ANNE MULE
COUNSELING PSYCHOLOGY



JOANNE MUMBEEY
NUTRITION



JOSEPH NACION
MANAGEMENT



NATALIE NACIONALES
SPORTS/ENTERTAINMENT/EVENT
MANAGEMENT



JAMIE NASH
FOOD SERVICE MANAGEMENT



CATHRINE NELSON
SPORTS/ENTERTAINMENT/EVENT
MANAGEMENT



YVONNE NING
HOTEL & LODGING



JAIDA NISBETT
ACCOUNTING



ZOE NZIMANDE
CULINARY ARTS
NUTRITION



KELLY O'NEIL
COUNSELING PSYCHOLOGY



SAMAR O'NEIL
SPORTS/ENTERTAINMENT/EVENT
MANAGEMENT



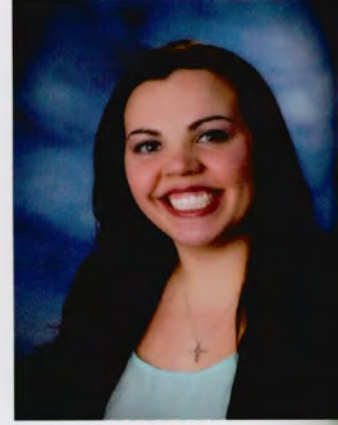
JASPER OBERFELDER-RIEH
CULINARY ARTS/FSM



JOANNE OCLARES-MARTINO
BUSINESS ADMINISTRATION



AMANDA OFFLEY
FASHION MERCHANDISING



JENNIFER OJITO
CULINARY ARTS
FOOD SERVICE MANAGEMENT



ANNE OLAVARRIA
CULINARY ARTS
FOOD SERVICE MANAGEMENT



KATHERYN OLIVER
SPORTS/ENTERTAINMENT/EVENT
MANAGEMENT



ASHLEY OLIVO
FASHION MERCHANDISING
RETAIL MARKETING



CALVIN ONG
MARKETING



CRYSTAL OVERSTREET
TRAVEL-TOURISM



REBECCA PACCIONE
FOOD SERVICE MANAGEMENT



ALEXA PACHOMSKI
FASHION MERCHANDISING
MARKETING



SANDRA PADILLA
CULINARY ARTS
NUTRITION



AIMEE PAGANO
FOOD SERVICE MANGEMENT



YOUNG CHUL PAIK
CULINARY ARTS



VICTOR PALACIOS
HOTEL & LODGING



YANI PAN
HOTEL & LODGING



ALYSSA PARADOWSKI
HOTEL & LODGING



MARICARMEN PAREDES
FINANCE



JARRETT PARKER
CULINARY ARTS
FOOD SERVICE MANAGEMENT



PAIGE PARSONS
FOOD & BEVERAGE MANAGEMENT



JOHANNA PASCALE
SPORTS/ENTERTAINMENT/EVENT
MANAGEMENT



JENNIFER PASSAFIUME



WOKIE PASSAWE
CRIMINAL JUSTICE



KAITLYN PATTEN
COUNSELING PSYCHOLOGY



KAROLINA PECZKOWICZ



JENNIFER PELKEY
COUNSELING PSYCHOLOGY



BIANCA PELLETIER
FASHION MERCHANDISING
RETAIL MARKETING



KRYSTAL PEREZ
CULINARY ARTS
FOOD SERVICE MANAGEMENT



NICOLE PETRONE
COUNSELING PSYCHOLOGY



AMBER PETTIT
FASHION MERCHANDISING



YANHUA PIAO
HOSPITALITY



KATHLEEN PIERRE
BAKING & PASTRY ARTS
FOOD SERVICE MANAGEMENT



REBECCA PLASCIK
SPORTS/ENTERTAINMENT/EVENT
MANAGEMENT



NICOLE POIRIER
EQUINE BUSINESS



ANJANA POKHREL
BUSINESS ADMINISTRATION



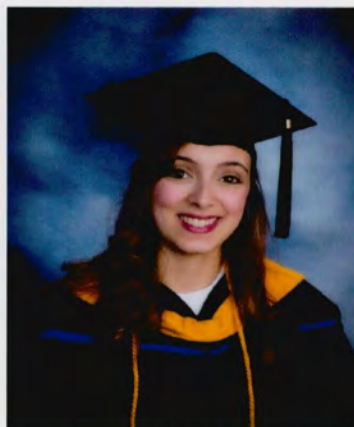
GESHANN PRATT
BAKING & PASTRY ARTS



BRITNI PULICE
FOOD SERVICE MANAGEMENT



ZHUJOMING QUAN
HOTEL & LODGING



JENNA RAI
BAKING & PASTRY ARTS
FOOD SERVICE MANAGEMENT



DEVIN RAINONE
INTERNATIONAL BUSINESS



LIYANA RAMLI
TRAVEL-TOURISM



MATTHEW RAYMOND
BUSINESS



AMANDA REECE
BAKING & PASTRY ARTS
FOOD SERVICE MANAGEMENT



SAMANTHA REED
BUSINESS MANAGEMENT



ADAM REID
CRIMINAL JUSTICE



SARAH REYNOLDS
BAKING & PASTRY ARTS
FOOD SERVICE MANAGEMENT



JENNA RHODES
SPORTS/ENTERTAINMENT/EVENT
MANAGEMENT



PATRICK RHODES
MARKETING



ROBERT RICHARD
FOOD & BEVERAGE MANAGEMENT



AVANESSA RICHARDSON



JULIA RIGGERT
BAKING & PASTRY ARTS



LAURA RILJO
HOTEL & LODGING



CORDERO RIVERA
CULINARY ARTS
FOOD SERVICE MANAGEMENT



TATIANA RIVERA
HOTEL & LODGING



ANAMARIA RODRIGUEZ
SPORTS/ENTERTAINMENT/EVENT
MANAGEMENT



FELICIA RODRIGUEZ
FASHION MERCHANDISING



KEVEN RODRIGUEZ
FOOD SERVICE MANAGEMENT



DANIELLE ROMERO
HOTEL & LODGING



JASMINE ROSARIO
CRIMINAL JUSTICE



YOLEIDI ROSARIO
CRIMINAL JUSTICE



KYLE ROSEN-LONG
CULINARY ARTS



AMANDA ROSENA
HOTEL & LODGING



HAASAN ROSS
SPORTS/ENTERTAINMENT/EVENT
MANAGEMENT



SARAH ROSTEN
CULINARY ARTS
FOOD SERVICE MANAGEMENT



LAMAR ROTHMALLER
CULINARY ARTS
FOOD SERVICE MANAGER



NATASHA SAING
ACCOUNTING
RETAIL MARKETING



SULAIMAN SAMA
NETWORK ENGINEERING



MOHAMMAD SAMAA
NETWORK ENGINEERING



REINA SAPUTELLI
INTERNATIONAL BUSINESS



SERINA SAUNDERS
COUNSELING PSYCHOLOGY



REBECCA SCARPATO
MARKETING



EMILY SCHLAG
NUTRITION



MARIA SCHWARTZ
FASHION MERCHANDISING
RETAIL MARKETING



PHILLIP SEBOLD
MARKETING



NOAH SEEGAR-POINT
ENTREPRENEURSHIP



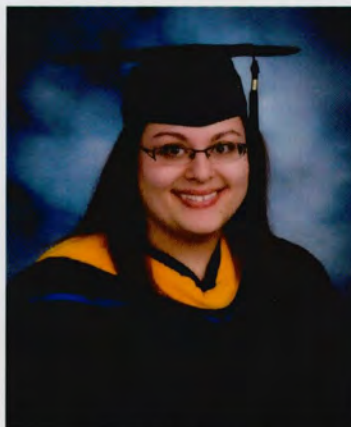
SHAKIRA SEELEY
COUNSELING PSYCHOLOGY



MARCUS SERA
FOOD SERVICE MANAGEMENT



JASON SERAPHIN
MARKETING



ERICA SHARP
BAKING & PASTRY ARTS



JOSEMAR SILVA
CRIMINAL JUSTICE



JANAЕ SIMMS GRIFFIN
COUNSELING PSYCHOLOGY



SAMANTHA SINON
GRAPHIC DESIGN



KIANA SMILING
COUNSELING PSYCHOLOGY



CHRIS SMITH
BUSINESS ADMINISTRATION



CIARA SMITH
CULINARY NUTRITION



JESSICA SMITH
GRAPHIC DESIGN



JENISSA SOARES
TRAVEL-TOURISM
HOSPITALITY



ALLISON SOLOMON
CULINARY ARTS



JIYEON SONG
CULINARY ARTS
FOOD SERVICE MANAGEMENT



JINTANA SOUVANNAVONGSA
HOTEL & LODGING



KRISTINA SPELLMAN



LEANDRA SPRULL
CRIMINAL JUSTICE



WILLIAM STENGER
FOOD SERVICE ENTREPRENEURSHIP



CARLY STEPHENS
HOTEL & LODGING



JONATHAN STOYER
ENTREPRENEURSHIP



DOMONIQUE STURRUP
BAKING & PASTRY ARTS



WEI-PING SU
GENERAL MBA



YUN-TING SU
HOSPITALITY



PHILLIP SWANSON
BUSINESS ADMINISTRATION



YU-JOU TAI
MBA HOSPITALITY



CAITLIN TEHAN
TRAVEL-TOURISM



JIALI TENG
HOSPITALITY



BRIANNA TETREAULT
SPORTS/ENTERTAINMENT/EVENT
MANAGEMENT



ZACHERY THORNE
BUSINESS MANAGEMENT



KAITLYN TODD
SPORTS/ENTERTAINMENT/EVENT
MANAGEMENT



RENEISHA TOPPIN
CRIMINAL JUSTICE



KEISHA TOUSSAINT
BUSINESS ADMINISTRATION



TRUMANE TROTMAN
ADVERTISING & MARKETING



MICHAEL TROZZI
FOOD SERVICE MANAGEMENT



HARLEE TURELL
BUSINESS MANAGEMENT



KELSEY UNDERWOOD
RISK MANAGEMENT



CLARENCE VAN DE MARK III



RAYMOND VARGAS
TRAVEL-TOURISM
HOSPITALITY



JORDAN VEIGA
CULINARY ARTS
NUTRITION



JOSEPH VIERRA
NETWORK ENGINEERING



JOSHUA WAITERS
SPORTS/ENTERTAINMENT/EVENT
MANAGEMENT



AJA WALLACE
COUNSELING PSYCHOLOGY



DUO WANG
HOSPITALITY



JING WANG
RETAIL MARKETING



LIH YEU WANG
HOTEL & LODGING



PEI-JUNG WANG
MBA HOSPITALITY



SHULING WANG
HOTEL & LODGING



WENCHUN WANG
RESTAURANT, FOOD & BEVERAGE
MANAGEMENT



ERIKA WARREN
SPORTS/ENTERTAINMENT/EVENT
MANAGEMENT



JAELLEN WASHINGTON
BUSINESS



JAMSINE WASHINGTON
BUSINESS ADMINISTRATION



ALANA WASSERMAN
CRIMINAL JUSTICE



DAVID WEBSTER
CULINARY ARTS



ANGEL WHITE
CULINARY ARTS
FOOD SERVICE MANAGEMENT



HILLARY WHITE
SPORTS/ENTERTAINMENT/EVENT
MANAGEMENT



TAWESHA WHITE
CRIMINAL JUSTICE



CHARDAE WILLIAMS
CRIMINAL JUSTICE



DANA WILLIAMS
CRIMINAL JUSTICE



GRACE WILLIAMS
INTERNATIONAL BUSINESS



KAYLA WILLIAMS
FASHION MERCHANDISING
RETAIL MARKETING



RONEISHA WILLIAMS
FOOD SERVICE MANAGEMENT



MADELEINE WILSON
FOOD SERVICE MANAGEMENT



NICHOLAS WILSON
HOSPITALITY



ANDREW WONG
TRAVEL-TOURISM



JASON WRIGHT
MARKETING
ECONOMICS



YIWEN WU
HOSPITALITY



RUHAN XIAO
HOTEL & LODGING



XIAOXUAN XU
HOTEL & LODGING



JACKLYN YANG
FOOD SERVICE MANAGEMENT



YALIN YANG
HOTEL & LODGING
CULINARY ARTS



JUNGHWAN YOON
FOOD SERVICE MANAGEMENT



PENG YU
HOTEL & LODGING



VIVIAN YU
HOSPITALITY



RACHIDA ZALMAT
BUSINESS ADMINISTRATION



JACQUELINE ZEINER
SPORTS/ENTERTAINMENT/EVENT
MANAGEMENT



TINGYU ZENG
HOTEL & LODGING



KUN ZHAO
SOFTWARE ENGINEERING



FEIYANG ZHANG
HOSPITALITY



LUDAN ZHANG
HOTEL & LODGING



ZHONGYAN ZHANG
HOSPITALITY



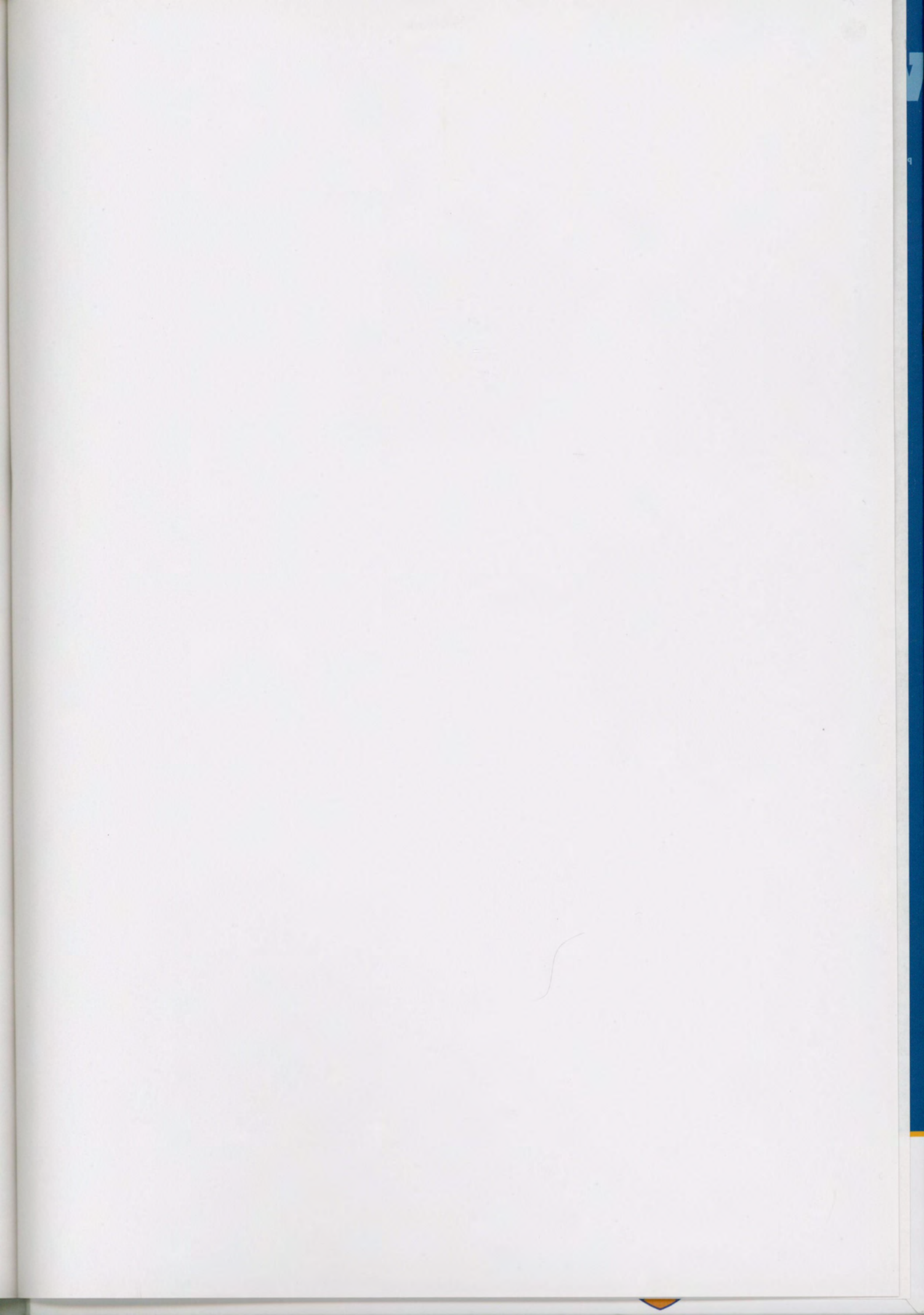
JING (FLORA) ZHOU
ACCOUNTING



JUNCHEN ZONG
FINANCE



ALLISON ZZIE
FOOD & BEVERAGE MANAGEMENT
SALES & MARKETING MANAGEMENT





THE WILDCAT WAY

PRIDE | COURAGE | CHARACTER | COMMUNITY



JOHNSON & WALES
UNIVERSITY



03541649