

Spring 2013

Check It Out! Library Newsletter, Spring 2013

Johnson & Wales University - Providence

Follow this and additional works at: https://scholarsarchive.jwu.edu/lib_newsletter

Repository Citation

Johnson & Wales University - Providence, "Check It Out! Library Newsletter, Spring 2013" (2013). *JWU Library Newsletter - Providence Campus*. 17.
https://scholarsarchive.jwu.edu/lib_newsletter/17

This Newsletter is brought to you for free and open access by the University Libraries at ScholarsArchive@JWU. It has been accepted for inclusion in JWU Library Newsletter - Providence Campus by an authorized administrator of ScholarsArchive@JWU. For more information, please contact jcastel@jwu.edu.

Check it out! Library Newsletter

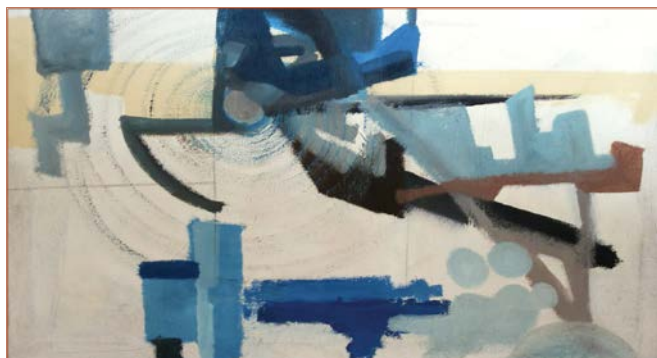
The Art Space at JWU Library Welcomes
Book it! Library Inspired Paintings
By Jennifer Rolfsema

“I am happy to be a part of the space at the Johnson & Wales University Library! It reminds me of the vast resources that are available every day for research, study, casual reading, general knowledge...”

So says graphic artist **Jennifer Rolfsema**, whose library inspired paintings will be on display in the Downcity library starting in March.

Ms. Rolfsema has worked for JWU Design & Editorial Services for the past seven years. She is also a small business owner, operating *CreativeChica*, a full-service graphic design & fine art consultancy. (www.creativechica.com) An alumna and presidential scholar of the *Rhode Island School of Design*, Ms. Rolfsema has been painting professionally for more than 15 years, drawing artistic inspiration from her international and U.S. travels, continual study and a rich narrative imagination. She works in a variety of media including oil, acrylic, watercolor, pastel, charcoal, graphite, collage and photography.

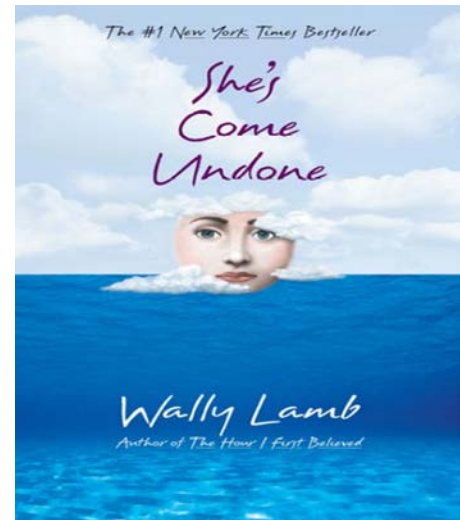
The Art Space at JWU Library is an initiative to raise awareness on campus of graphic and studio art created by JWU faculty, staff and students. Anyone interested in exhibiting their art work at the library may contact librarian Ariela McCaffrey, amccaffrey@jwu.edu



Painting by Jennifer Rolfsema

Exhibit & Opening Reception
March 2013

Campus Reads 2013



Are you ready for Campus Reads 2013? Fast becoming one of the university's most noted annual events, this year the university will focus on the debut novel of Connecticut based author **Wally Lamb**. A reviewer in *Bookseller Magazine* called the tale of the book's heroine, Dolores Price, “disturbingly real yet magical.”

You can purchase a copy of the book from the JWU Bookstore or borrow a copy from JWU Library (Downcity or Harborside).

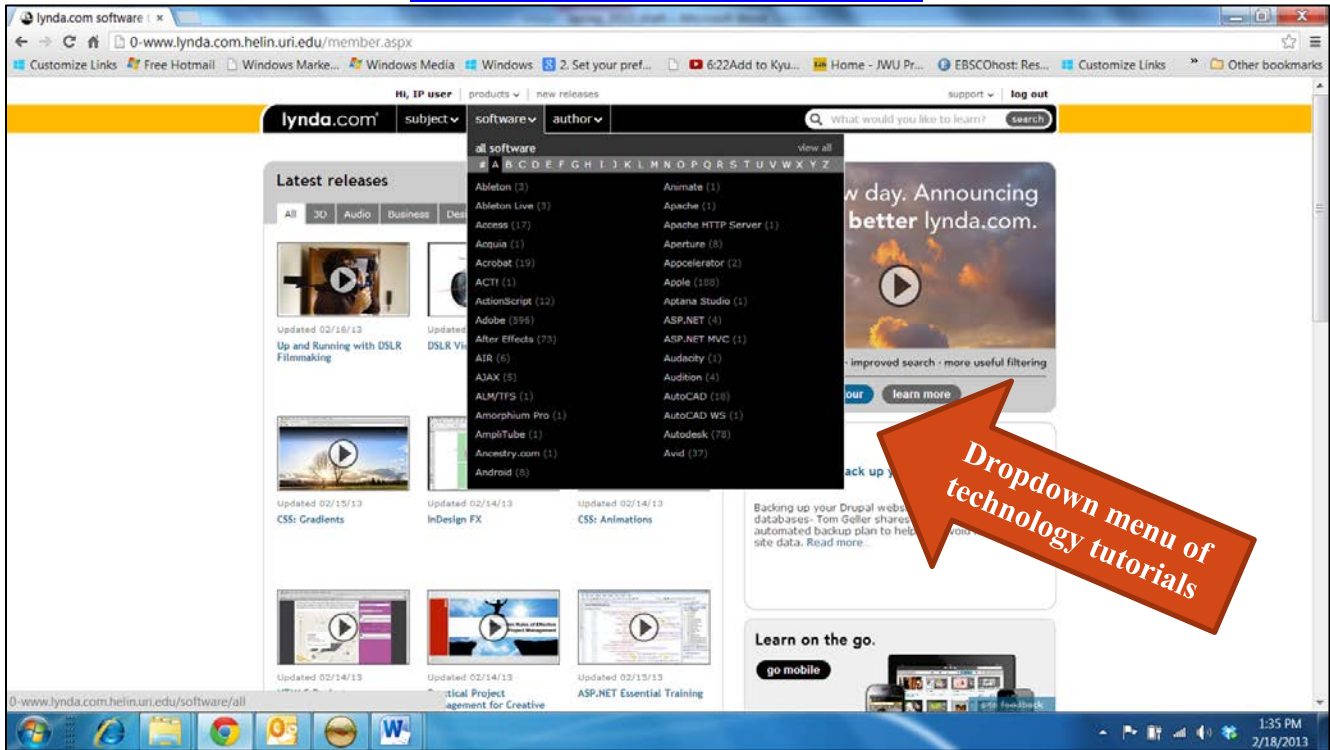
For additional information about the book and the author, don't forget to check out the library's online research guide:

<http://jwu-ri.libguides.com/wallylamb>





<http://0-www.lynda.com.helin.uri.edu>



MEET LYNDA

Lynda.com is an online training library of 1,600+ streamed video tutorials on a wide array of software from *Ableton* to *Zoomerang*. The videos are all available from the JWU Library **Databases A-Z** page, or can be viewed on an Android, iPhone or iPad using the Lynda.com mobile app.

Lynda also happens to be a real person: special effects animator, motion graphics expert, author, writer, entrepreneur and company cofounder **Lynda Weinman**. You can watch a video on the Lynda.com website to learn how the real Lynda started Lynda.com/

Since July 2010, Johnson & Wales students, faculty and staff have watched nearly **5,000** Lynda.com tutorials.



How many tutorials are there on specific software? Here is just a select list of what Lynda.com offers:

Software	# Tutorials
After Effects	73
Autodesk	80
CINEMA 4D	24
CSS	25
Dreamweaver	62
Drupal	12
Final Cut Pro	25
Flash Pro	69
HTML	25
Illustrator	63
InDesign	69
JQuery	27
Mac OS X	18
Macromedia	43
Microsoft	181
Photoshop	165