

Menu...



THE CRESCENT

New York—New Orleans

All-Pullman Train between Washington-Atlanta

The 4,000 H.P. Diesel-electric locomotives now being used on "The Crescent" between Washington and Atlanta insure smoother operation of this high-class train, and this improvement in operating power will undoubtedly be appreciated by the traveling public.

SOUTHERN RAILWAY SYSTEM

★ Ask your waiter for... ★


"33 to 1"
— it sure makes
good food taste better

Copyright 1941, Pabst Brewing Co., Milwaukee



Pabst Blue Ribbon
Blended 33 to 1


33 FINE BREWS BLENDED TO MAKE ONE GREAT BEER



NEW CAFETERIAS

ASHEVILLE, N. C. WASHINGTON, D. C. KNOXVILLE, TENN.
ATLANTA, GA. CHATTANOOGA, TENN. RALEIGH, N. C.
CHARLOTTE, N. C. ROANOKE, VA.

Over seven million meals served yearly



Breakfast A La Carte

Fruits, Etc.

Chilled Melon, 25
Tomato Juice, 15 Orange Juice, 15; Double Portion, 30
Pineapple Juice, 15 Grape Juice, 15 Grapefruit Juice, 15
Stewed Prunes with Cream, 25 Breakfast Figs, 25
Sliced Peaches with Cream, 25 Strained Honey, 20

Cereals

Cereals with Cream, 25
Ralston Wheat Cereal, Shredded Ralston,
Cream of Wheat, Quaker Oats, Wheat Hearts, Puffed Wheat,
Puffed Rice, Rice Krispies, Post Toasties, Pep, Corn
Flakes, Wheaties, Shredded Wheat, All Bran,
Post Bran, Grape Nuts

Fish Ham, Bacon Etc.

Broiled or Fried Fresh Fish, Lemon Butter, 80
Corned Beef Hash with Poached Egg, 65
Kipperd Herring with Scrambled Eggs, 50
Buckwheat or Corn Cakes with Bacon, 50
Omelet with Chopped Ham, 60
Lamb Chops (1) 40, (2) 75
Ham or Bacon with Eggs, 60
Fried or Broiled Ham, 60; Fried or Broiled Bacon, 60

Potatoes

American Fried, 20 Hashed Brown, 20 French Fried, 20

Eggs and Omelets

Eggs: Boiled, Fried, Scrambled or Shirred, 30 Poached on Toast, 45
Omelets: Plain, 35; with Jelly, Chopped Ham or Bacon, 60

Bread

Dry or Buttered Toast, 15 Milk Toast, 30
French Toast with Jelly or Honey, 40
Bran Muffins, 10 White or Whole Wheat Bread, 10
Griddle Cakes with Maple or Georgia Cane Syrup, 30


Beverages

Coffee, pot, 20 Tea, pot, 20 Cocoa, pot, 20
Kaffee Hag, pot, 25 Postum, pot, 25 Sanka Coffee, pot, 25
Malted Milk, hot or cold, 25 Grade "A" Pasteurized Milk, 10

YOUR NATIONAL HOST in the NATION'S CAPITAL

WASHINGTON'S
most distinctive
LOCATION!

Directly opposite the U.S. Treasury, Department of Commerce, overlooking the White House and Parks.
400 Rooms with rates, Single from \$3.50 and Double from \$5.00.



HOTEL WASHINGTON
WASHINGTON, D. C.
Affiliated NATIONAL HOTELS

Breakfast Selections

Please order by Number and write each item on check

No. 1—75c

Fruit, Fruit Juice or Cereal
Grilled Sugar-cured Bacon
Corn Cakes or Buckwheat Cakes with
Georgia Cane or Maple Syrup

Coffee Tea Milk

No. 2—85c

Fruit, Fruit Juice
or
Cereal with Cream

Corned Beef Hash, Poached Egg
Eggs or Omelet as desired
Minced Ham with Scrambled Eggs
Ham or Bacon with Eggs
Scrambled Eggs with Kipperd Herring

Bran Muffins Toast
Coffee Tea Milk

No. 3—\$1.00

Fruit or Fruit Juice
Cereal with Cream

Grilled Fresh Fish
Ham or Bacon with Eggs
Corned Beef Hash, Poached Egg
Lamb Chop with Scrambled Eggs
Scrambled Eggs with Kipperd Herring

Bran Muffins Toast
Griddle Cakes with Syrup
Coffee Tea Milk

Stewards are not authorized to deviate from combinations above shown.

Service of Meals Outside of Dining Cars 25c Extra per Person.

The States of North Carolina and Alabama assess a sales tax of 3% and 2%, respectively, on the value of meals served in dining cars, which tax must be collected from the buyer.

W. F. KUSCH, Manager Dining Cars, Washington, D. C.

PLEASE REFER
TO BACK COVER

★ 2 GREAT NAMES ★ 2 GREAT HOTELS

2400 ROOMS WITH PRIVATE BATH MODERATE RATES IN THE CENTER OF MIDTOWN NEW YORK

BANQUET FACILITIES UP TO 1500

HOTEL LINCOLN
44TH TO 45TH AT 8TH AVE.
JOHN L. HORGAN
General Manager

HOTEL EDISON
46TH TO 47TH AT BROADWAY
HUGH J. CONNOR
Manager

OWNERSHIP MANAGEMENT
MARIA KRAMER
PRESIDENT

DINE & DANCE to famous Radio Bands

IN THE BLUE ROOM IN THE GREEN ROOM

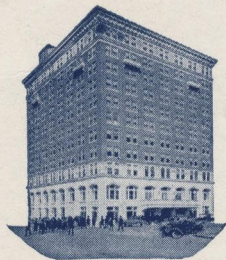
WIRE RESERVATIONS COLLECT



The Chef is an Expert...
BUT
Budweiser
MAKES EVEN HIS FOOD TASTE BETTER



TRADE MARK REG. U. S. PAT. OFF.



MONTGOMERY

THE JEFFERSON DAVIS
W. H. MOORE, *Vice-Pres. & Mgr.*



ATLANTA

THE ANSLEY
L. L. TUCKER, *Resident Mgr.*



NASHVILLE

THE ANDREW JACKSON
LEON W. WOMBLE, *Manager*

LANDMARKS

of Southern Friendliness

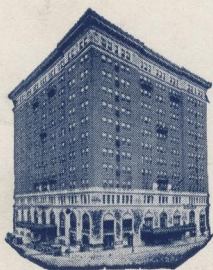
In seven southern cities, Dinkler Hotels stand as landmarks of southern friendliness in hotel service.

Every comfort and service await the traveler and visitor who desires first class accommodations, plus that extra touch of genuine friendliness—which brings guests back again and again.



GREENSBORO

THE O. HENRY
W. J. BLACK, *Manager*



BIRMINGHAM

THE TUTWILER
R. BURT ORNDORFF, *Vice-Pres. & Mgr.*

DINKLER HOTELS

CARLING DINKLER, *President* HENRY C. HEINZ, *Treas.*

3000 Rooms In Southern Hotels



NEW ORLEANS

THE ST. CHARLES
JOHN J. O'LEARY, *Vice-Pres. & Mgr.*



SAVANNAH

THE SAVANNAH
HOMER SPIVA, *Manager*

IF YOU ARE INTERESTED IN SECURING ADVERTISING SPACE IN THIS MENU, IT IS SUGGESTED THAT YOU ADDRESS THE KELLOGG GROUP, INC., 30 ROCKEFELLER PLAZA, NEW YORK CITY.