

MAIN BUILDING

*Simmons College*

AT BOSTON

served by the Boston and Albany Route

of the

**New York Central**



# New York Central System Dining

## Special Combinations

<p>1.65</p> <p>Omelette Souffle with Onions and Green Peppers, String Beans, Fried Potatoes</p> <hr/> <p>Roll and Butter</p> <hr/> <p>Ice Cream or Cheese and Crackers</p> <hr/> <p>Coffee, Tea or Milk</p>	<p>1.75</p> <p>Little Pork Sausages on Mashed Potatoes, Buttered Carrots</p> <hr/> <p>Roll and Butter</p> <hr/> <p>Fruit Pudding or Ice Cream</p> <hr/> <p>Coffee, Tea or Milk</p>
---	--

<p>1.95</p> <p>Hot Roast Turkey Sandwich with Poultry Dressing Mashed Yellow Turnips, Riced Potatoes</p> <hr/> <p>Cheese and Crackers or Ice Cream</p> <hr/> <p>Coffee, Tea or Milk</p> <p>(Soup or Tomato Juice will be served with any of the above for 20c. additional)</p>
--

## A la Carte

Cream of Vegetable Soup, Cup 30	Consomme, Hot or Cold, Cup 30
Fresh Fruit Cup 30	Chilled Tomato Juice 25

Welsh Rarebit on Toast, Lettuce and Tomatoes, Saratoga Chips 1.20	
Toasted Chicken, Bacon and Lettuce Sandwich, Mayonnaise, Pickle Slices, Saratoga Chips 1.25	
Combination Ham and Cheese Sandwich 75	Chicken Salad Sandwich 85
Combination Salad 70	Lettuce and Tomato Salad 60
The Salad Bowl, Century Dressing, Ry-Krisp 85	

Mince Pie 30	Half Grapefruit 35
Fruit Pudding, Sweet Sauce 35	Vanilla or Chocolate Ice Cream 35
Liederkrantz, American or Blue Cheese, Toasted Crackers 40	
Cream Cheese with Toasted Rye Bread and Jelly 45	

Individual Milk 20	Tea, Pot 25	Coffee, Pot 25; Cup 15
Cocoa, Pot 25	Sanka, Pot 25	

A service charge of 50c. per person will be made for all meals served outside of dining car. This service is subject to delay when dining car is busy.

Where train operation permits, this car will be open for service until 9.30 P. M., Standard Time.

A. E. Yarlott, General Superintendent  
Dining Service 260 E. 161st St., New York 51, N. Y.

K-10-30-49

LW-LD

Broiled or Sauted Fresh Fish  
with Chef's Salad and Potatoes  
Choice of Desserts or Selective Meals

Tea                      Individual Milk                      Coffee

\$1.75

(Soup or Tomato Juice served for 20c additional)

101

Following items will be served with meals listed below at additional prices shown

Cream of Vegetable Soup 20	Consomme, Hot or Cold 25
Fresh Fruit Cup 25	Chilled Tomato Juice 20

Sardine Canapes 25

Price opposite each entree includes dessert and beverage

FILET OF HADDOCK SAUTE, MEUNIERE	
String Beans, Thin Fried Potatoes	1.75

CASSEROLE OF LAMB, BISCUIT TOP	
Mixed Vegetables, Plate Salad	1.90

OVEN BAKED MEAT LOAF, PAN GRAVY	
Buttered Carrots, Snowflake Potatoes	1.90

GRILLED NATIVE PORK CHOPS, APPLE SAUCE	
Fresh Vegetable, Thin Fried Potatoes	2.20

ROAST YOUNG TURKEY, POULTRY DRESSING	
Mashed Yellow Turnips, Potatoes du Jour	2.25

(Hearts of Lettuce, 1000 Island Dressing served with these meals for 25c. additional)

Mince Pie	Fruit Pudding, Sweet Sauce
Chilled Grapefruit (Half)	Chocolate or Vanilla Ice Cream

Liederkrantz, Blue or American Cheese with Toasted Crackers

Cream Cheese with Toasted Rye Bread and Jelly

Coffee	Individual Milk	Tea
--------	-----------------	-----

Dry Martini or  
Manhattan  
Cocktail . . . . .65

Imported Sherry or  
Port Wine ..60

American Wine  
Bottle . .65-1.20

Canadian Ale,  
Bottle . . . . .55

Please write on  
check each item  
desired.  
Waiter cannot  
accept verbal  
orders.

CHILDREN — Ask  
for special menu or  
we shall be pleased  
to furnish dishes for  
children whose par-  
ents wish to share  
portions with them.

Buy Christmas Seals



Help Stamp Out TB



# New York Central System Dining Service

## Special Combinations

<p>1.65 Omelette Souffle with Onions and Green Peppers, String Beans, Fried Potatoes</p> <hr/> <p>Roll and Butter</p> <hr/> <p>Ice Cream or Cheese and Crackers</p> <hr/> <p>Coffee, Tea or Milk</p>	<p>1.75 Little Pork Sausages on Mashed Potatoes, Buttered Carrots</p> <hr/> <p>Roll and Butter</p> <hr/> <p>Fruit Pudding or Ice Cream</p> <hr/> <p>Coffee, Tea or Milk</p>
--	---

<p>1.95 Hot Roast Turkey Sandwich with Poultry Dressing Mashed Yellow Turnips, Riced Potatoes</p> <hr/> <p>Cheese and Crackers or Ice Cream</p> <hr/> <p>Coffee, Tea or Milk</p>
--

(Soup or Tomato Juice will be served with any of the above for 20c. additional)

## A la Carte

Cream of Vegetable Soup, Cup 30	Consomme, Hot or Cold, Cup 30
Fresh Fruit Cup 30	Chilled Tomato Juice 25

Welsh Rarebit on Toast, Lettuce and Tomatoes, Saratoga Chips 1.20	
Toasted Chicken, Bacon and Lettuce Sandwich, Mayonnaise, Pickle Slices, Saratoga Chips 1.25	
Combination Ham and Cheese Sandwich 75	Chicken Salad Sandwich 85
Combination Salad 70	Lettuce and Tomato Salad 60
The Salad Bowl, Century Dressing, Ry-Krisp 85	

Mince Pie 30	
Fruit Pudding, Sweet Sauce 35	Half Grapefruit 35
Vanilla or Chocolate Ice Cream 35	
Liederkrantz, American or Blue Cheese, Toasted Crackers 40	
Cream Cheese with Toasted Rye Bread and Jelly 45	

Individual Milk 20	Tea, Pot 25	Coffee, Pot 25; Cup 15
Cocoa, Pot 25	Sanka, Pot 25	

A service charge of 50c. per person will be made for all meals served outside of dining car.  
This service is subject to delay when dining car is busy.

Where train operation permits, this car will be open for  
service until 9.30 P. M., Standard Time.

A. E. Yarlott, General Superintendent  
Dining Service 260 E. 161st St., New York 51, N. Y.

K-10-30-49

LW-LD

## Selective Meals

Following items will be served with meals listed below at additional prices shown

Cream of Vegetable Soup 20	Consomme, Hot or Cold 25
Fresh Fruit Cup 25	Chilled Tomato Juice 20
Sardine Canapes 25	

Price opposite each entree includes dessert and beverage

FILET OF HADDOCK SAUTE, MEUNIERE	
String Beans, Thin Fried Potatoes	1.75

CASSEROLE OF LAMB, BISCUIT TOP	
Mixed Vegetables, Plate Salad	1.90

OVEN BAKED MEAT LOAF, PAN GRAVY	
Buttered Carrots, Snowflake Potatoes	1.90

GRILLED NATIVE PORK CHOPS, APPLE SAUCE	
Fresh Vegetable, Thin Fried Potatoes	2.20

ROAST YOUNG TURKEY, POULTRY DRESSING	
Mashed Yellow Turnips, Potatoes du Jour	2.25

(Hearts of Lettuce, 1000 Island Dressing served with these meals for  
25c. additional)

Mince Pie	Fruit Pudding, Sweet Sauce
Chilled Grapefruit (Half)	Chocolate or Vanilla Ice Cream
Liederkrantz, Blue or American Cheese with Toasted Crackers	
Cream Cheese with Toasted Rye Bread and Jelly	

Coffee	Individual Milk	Tea
--------	-----------------	-----

Dry Martini or  
Manhattan  
Cocktail . . . . .65

Imported Sherry or  
Port Wine . .60

American Wine  
Bottle . .65-1.20

Canadian Ale,  
Bottle . . . . .55

Please write on  
check each item  
desired.  
Waiter cannot  
accept verbal  
orders.

CHILDREN — Ask  
for special menu or  
we shall be pleased  
to furnish dishes for  
children whose par-  
ents wish to share  
portions with them.

Buy Christmas Seals



Help Stamp Out TB



**SIMMONS COLLEGE**, the first women's college in America to combine liberal education with professional preparation, was incorporated in 1899 under the will of John Simmons, wealthy Boston merchant of the last century.

Located on the picturesque Fenway, Simmons offers programs in the eight schools of Business, English, Home Economics, Library Science, Nursing, Preprofessional Studies, Retailing, Science, and the graduate School of Social Work to more than 1500 students.

The College has 11,000 alumnae, with many Simmons Clubs throughout the country. Simmons' Student Government has been acknowledged one of the finest student administrative bodies. The only honor society is "Academy" which is maintained for students of exceptional scholastic achievement.

Facing its 50th Anniversary, Simmons today is in the midst of an appeal for \$3,500,000 for the construction of a library, science center, social and health unit, and the endowment of faculty salaries.

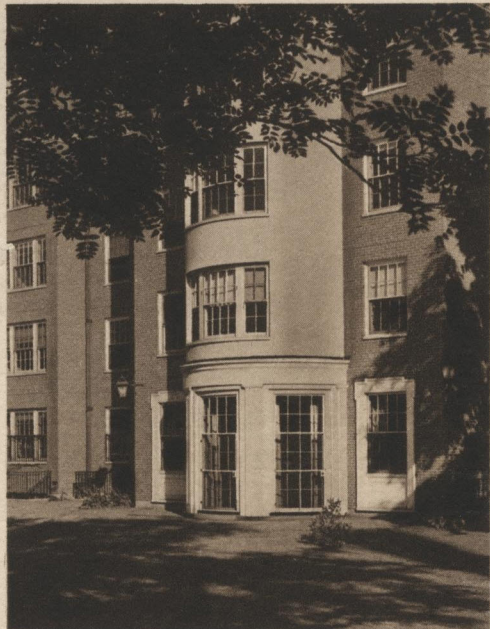
Bancroft Beatley, LL.D., is its second President.



THE COLONNADE

SIMMONS COLLEGE has been served by the Boston and Albany Route of the New York Central System since the establishment of the college in 1899.

This was about the time when the Boston and Albany Railroad was leased to and became an integral part of the New York Central System. The historic predecessor railroads of the Boston and Albany were the Boston and Worcester, The Western Railroad of Massachusetts and the Albany and West Stockbridge. Their combination gave New England a single through railroad to the West.



EVANS HALL

## SIMMONS ALMA MATER

*Hail, Alma Mater! We pledge our love to thee.  
Bring thee our hearts and hands in full loyalty.  
Praising thy counsel and trusting thy truth  
Lift we our song to thee: Oh guide thou our youth!*

*Lift we our song to thee: Oh bless now our youth!*

*Make us, thy children, generous and just,  
Send us to labor when leave thee we must,  
Ready for service and worthy of trust.*

*Hail, Alma Mater! Thy praises we sing.  
One in allegiance our tributes we bring.  
Fair shall thy name be, trusted to our care,  
For thy dear sake our lives shall be more fair,  
For thy dear sake our lives shall be more fair.  
Make us, thy children, strong and pure and just,  
Send us to labor when leave thee we must,  
Ready for service and worthy of trust.*

Today New York Central's Great Steel Fleet includes such famous limiteds as The New England States and The Paul Revere, deluxe trains with all new equipment between Boston and Chicago; The Southwestern Limited, between Boston, Cincinnati and St. Louis and The New England Wolverine between Boston, Detroit and Chicago.

The Boston and Albany freight service is an arm of New England's domestic commerce and through splendid port facilities in Boston Harbor an important factor in international trade.