

Fall 10-3-2011

Possible Symbolics 33

Stephen Andrade

Johnson & Wales University - Providence, sandrade@jwu.edu

Follow this and additional works at: https://scholarsarchive.jwu.edu/cgd_fac

 Part of the [Game Design Commons](#), [Graphic Design Commons](#), [Illustration Commons](#), [Industrial and Product Design Commons](#), [Interactive Arts Commons](#), and the [Interdisciplinary Arts and Media Commons](#)

Repository Citation

Andrade, Stephen, "Possible Symbolics 33" (2011). *Computer Graphics Department Faculty Publications and Creative Works*. 1.
https://scholarsarchive.jwu.edu/cgd_fac/1

This Fine Art is brought to you for free and open access by the College of Engineering & Design at ScholarsArchive@JWU. It has been accepted for inclusion in Computer Graphics Department Faculty Publications and Creative Works by an authorized administrator of ScholarsArchive@JWU. For more information, please contact jcastel@jwu.edu.

Catalog

Possible Symbolics 33

Assembled Work - Fall 2011

Paintings & Sculpture Exhibition
Johnson & Wales University Library
October 3-November 11



Stephen Andrade
Associate Professor
Computer Graphics
School of Technology
Johnson & Wales University

Opening Reception
Thursday, October 6
4-5:30pm
University Library
Yena Center
2nd Floor
111 Dorrance Street
Providence, RI

Available for purchase or rental
Contact sandrade@jwu.edu
401-253-1252

Possible Symbolics 33 - Fall 2011

Steve Andrade
Associate Professor
Computer Graphics
School of Technology

Professor Steve Andrade is continuously experimenting in a wide range of visual arts and technology. He is an avid researcher in the areas of interactive technology, gaming, modern visual metaphor, archeology, fine arts, Western geology and the sociology of technology space.

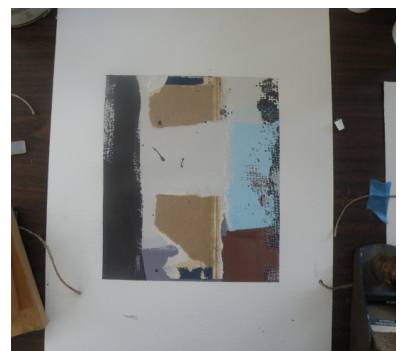
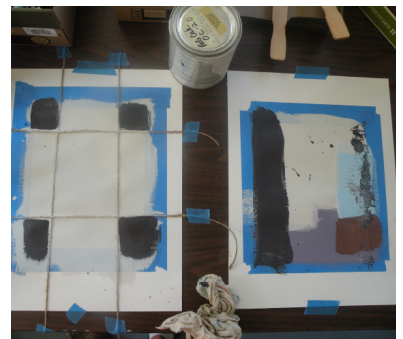
When he is not teaching or conducting projects at the University, Professor Andrade can be found traveling or working in his studio (pictured here). His artwork includes digital imaging, graphic art posters, virtual space planning, information graphics, 2d and 3d sculpture, representational sketching, realism, video and his current passion - abstract modern painting with a hint of allegory. He is an active writer and researcher on professional and creative topics.

Andrade's current work is influenced by recent visual research into a number of well and lesser known 20th century artists including Marcel Duchamp (French), Wassily Kandinsky (Russian), Antoni Tapes (Spanish), Willem deKooning (Dutch American), Paul Klee (Swiss), Ron Ehrlich (American), prehistoric cave painters, Southwestern American Indian glyph artists, skateboarders, steampunk, the LA art scene, the iPad, and Afghani Taliban graffiti.

His paintings are elaborate compositions of layers, surface, shape and material. The use of color both coordinates and disrupts space. Border and color are used to create frames that sometimes hold alphanumeric images that loosely weave a tale. Iconic images are embedded to deepen mystery and meaning, resulting interpretations unique to each viewer.

Andrade's sculpture is out of the "assemblage" tradition. Created out of "found" objects, each piece redefines the relationship objects have to each other to create a whole. Roland Penrose, a prominent modern art critic writes, "Frequently it is the presence of a familiar object in unexpected surroundings that awakens us." Andrade's sculptures evoke the authenticity of elements such as wood, rope, wire, metal and bone.

Professor Andrade teaches a number of courses in the Computer Graphics department at the School of Technology. He has recently been active in gaming research, architecture and prototyping collaborations with GTECH experts and JWU students.



Possible Symbolics
Assembled Work Fall 2011

Description

I. Paintings on masonite panel



1. *Glyph 1* - 2011 Acrylic, latex, watercolor paint on masonite panel 18 x 24 inches.



2. *Glyph 2* - 2011 Acrylic, latex, watercolor paint, on masonite panel 11 x 15 inches.



4. *Wall Glyphs* - 2011 Acrylic, latex, watercolor paint, cord on masonite panel 24 x 24 inches.



3. *Glyph 3* - 2011 Acrylic, latex, watercolor paint, on masonite panel 24 x 24 inches.



5. *Figurative 2* - 2011 Acrylic, latex, watercolor paint, on masonite panel 24 x 24 inches.



6. *Figurative 3* - 2011 Acrylic, latex, watercolor paint, on masonite panel 24 x 24 inches.



7. *Possible 1* - 2011 Acrylic, latex, watercolor paint, on masonite panel 24 x 24 inches.



8. *Possible 2* - 2011 Acrylic, latex, watercolor paint, on masonite panel 24 x 24 inches.



9. *Figurative 1* - 2011 Acrylic, latex, watercolor paint, varnish on masonite panel 36 x 36 inches.



10. *Possible Symbolics 1* - 2011 Acrylic, latex, paper, on masonite panel 24 x 24 inches.



11. *Possible Symbolics 2* - 2011 Acrylic, latex paint, paper, on masonite panel 24 x 24 inches.

II. Sculpture and assemblage



12. *Possible Screen* - Wood, cord, metal, bone, waxed string on metal base. 15 inches .



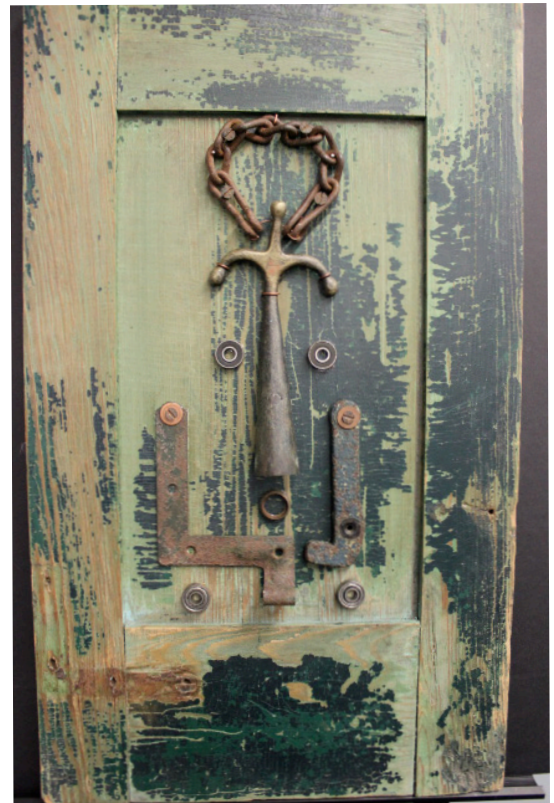
13. *Lamp base with brush* - Copper Arts & Craft base with worker's brush, 18 inches.



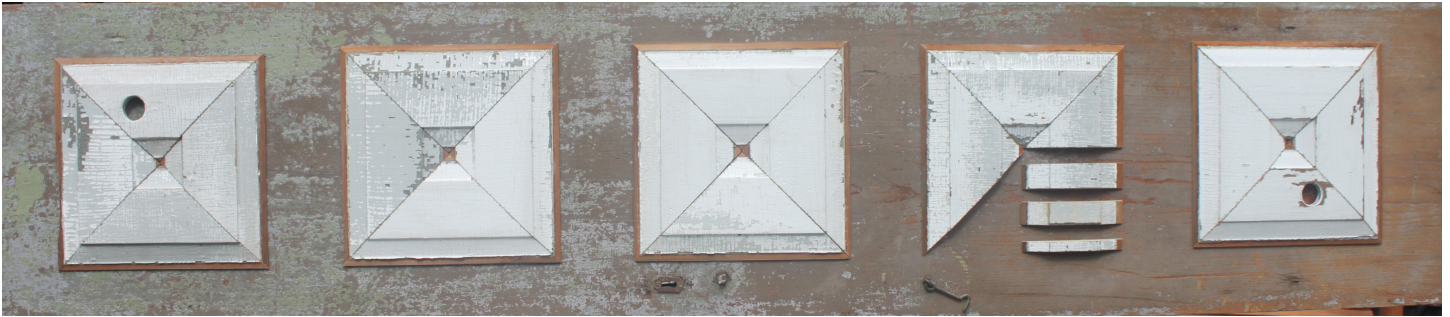
14. *Triptych 1* - Metal objects, burlap, paint, fasteners on wooden panel 15 x 26 inches.



15. *Triptych 2* - Metal objects, enamel medallion, paint, fasteners on wooden panel 15 x 26 inches.



16. *Triptych 3* - Metal objects, fasteners on wooden panel 15 x 26 inches.



17. *Parse* - Reconstructed distressed wooden decorative panels, fastened on antique wooden door, 80 x 18 inches .

III. Works on paper - unframed



18. *Untitled 1* - Acrylic, latex, watercolor, silver pencil on paper, 13 x 17 inches



19. *Untitled 2* - Acrylic, latex, watercolor, silver pencil on paper, 13 x 17 inches



20. *Untitled 4* - Acrylic, latex, watercolor, on paper, 13 x 17 inches



21. *Untitled 3* - Acrylic, latex, watercolor, paper/fabric book binder on paper, 13 x 17 inches



22. *Untitled 7* - Acrylic, latex, watercolor, cord on paper, 13 x 17 inches



23. *Untitled 8* - Acrylic, latex, watercolor, cord on paper, 13 x 17 inches

III. Works on paper



24. *Untitled 9* - Acrylic, latex, watercolor, burlap, wood, waxed string on paper, 13 x 17 inches



25. *Untitled 10* - Acrylic, latex, watercolor, wood, grout on paper, 13 x 17 inches



26. *Untitled 11* - Acrylic, latex, watercolor, on paper, 13 x 17 inches



27. *Untitled 6* - Acrylic, latex, watercolor, cord on paper, 13 x 17 inches



28. *Untitled 13* - Acrylic, latex, watercolor, grout, silver pencil, on paper, text adapted from Dr. Frank Crane, Man Message Corporation, pamphlet circa 1921, 13 x 17 inches.

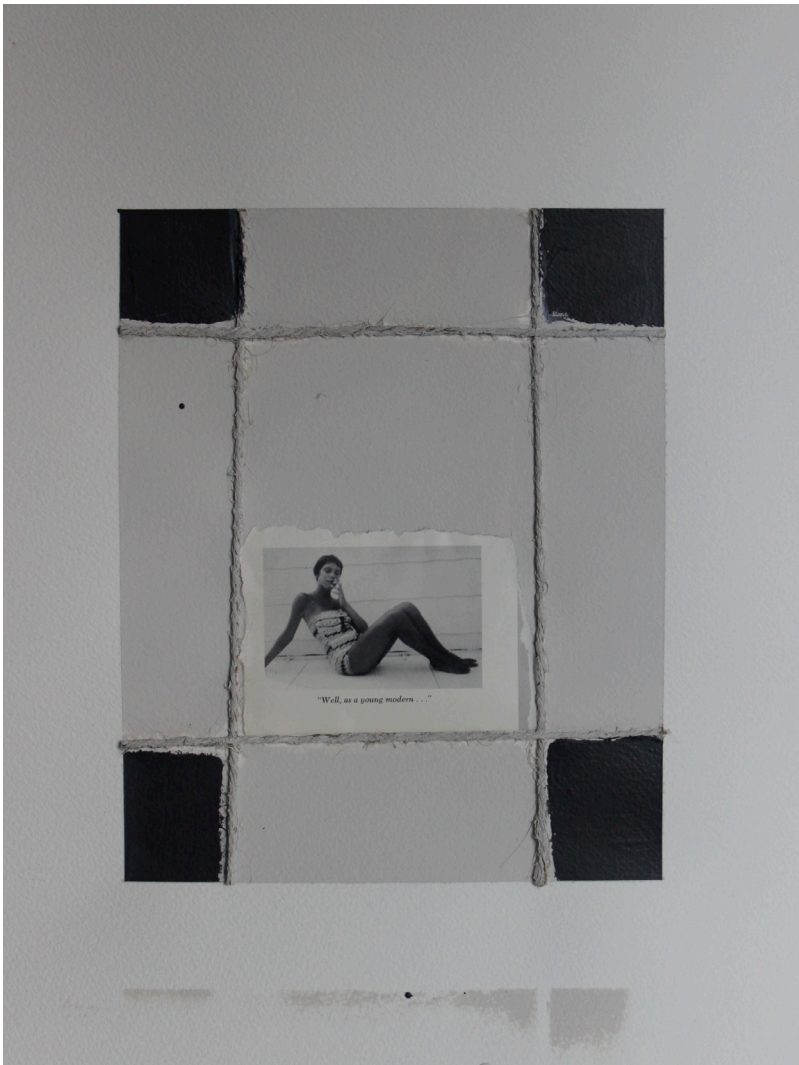


29. *Untitled 12* - Acrylic, latex, watercolor, on paper, 13 x 17 inches.



30. *Untitled 5* - Acrylic, latex, watercolor, on paper, 13 x 17 inches

III. Works on paper



31. *Young Modern* - Acrylic, latex, watercolor, grout, paper photo 1961, cord, on paper, 13 x 17 inches.



32. *11-22-33* - Acrylic, latex, watercolor, silver pencil, pen, cord on paper, 13 x 17 inches.

Additional and custom abstracts upon request